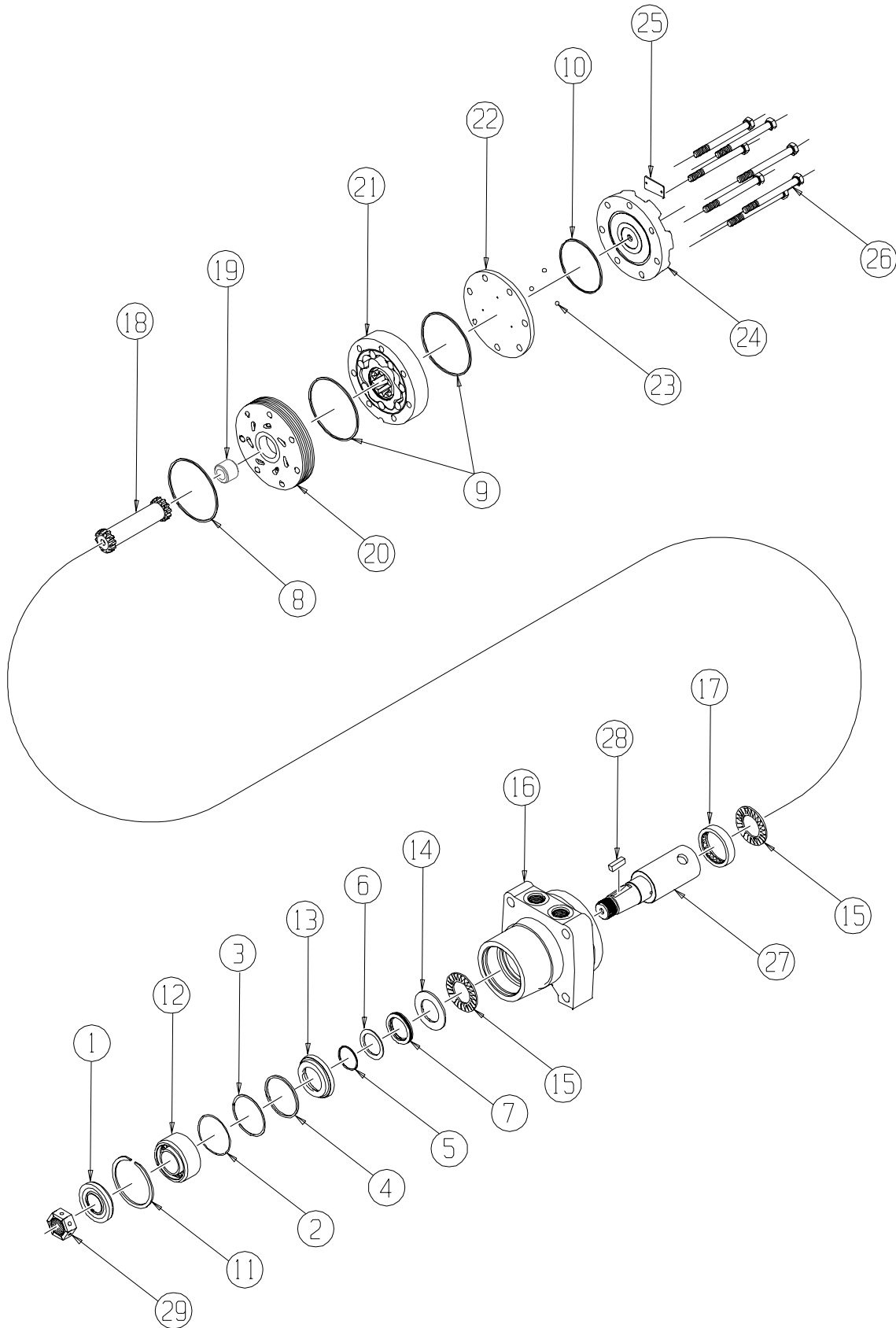


RE (520) Series



RE (520) SERIES MOTOR COMPONENTS

SEAL KIT 500444001

DESCRIPTION	EXP VIEW ITEM #	KIT
DUST SEAL	1	
SPLIT WIRE RING	2	ITEMS # 1-10, 13 & 14
METAL BACKUP SHIM	3	INCLUDED IN SEAL KIT
HIGH PRESSURE SEAL	4	500444001
METAL BACKUP SHIM	5	
TEFLON BACKUP SHIM	6	
SHAFT SEAL	7	ITEMS # 1-10
REAR HOUSING SEAL	8	INCLUDED IN SEAL KIT
BODY SEALS (2)	9	500444002
ENDCOVER SEAL	10	
SEAL CARRIER	13	ITEMS #13-14
THRUST WASHER	14	INCLUDED IN SEAL KIT
		500444003

MISCELLANEOUS KITS

DESCRIPTION	EXPLODED VIEW ITEM #	KIT
RETAINING SNAP RING	11	500018141
72MM BEARING	12	500018098
THRUST BEARING	15	500018059
REAR HOUSING BEARING	17	500018002
FORWARD MANIFOLD	20	500015006
REVERSE MANIFOLD	20	500015007
BALANCE PLATE (3 BALLS INCLD)	22	500012001
STEEL BALL (3)	23	500018048
ENDCOVER	24	500016001
DUST SEAL ONLY	1	500018006
1000 PSI RELIEF VALVE	NOT SHOWN	500018228
2000 PSI RELIEF VALVE	NOT SHOWN	500018231
3000 PSI RELIEF VALVE	NOT SHOWN	500018221
1.00-20 UNEF SLOTTED NUT	29	500449304
1.00-20 UNEF SOLID NUT	29	500449303
1.00-20 UNEF LOCK NUT	29	300339303P

ROTORS, DRIVE LINKS AND SPACERS, AND BOLTS

WHEN CHANGING MOTOR DISPLACEMENTS, A MATCHING ROTOR AND BOLT SET KIT MUST BE ORDERED. A NEW DRIVE LINK KIT MAY BE NECESSARY. DRIVE LINK SPACERS ARE INCLUDED IN DRIVE LINK KITS, BUT MAY ALSO BE ORDERED SEPERATELY BY USING THE DRIVE LINK SPACER KIT NUMBER.

EXPLODED VIEW ITEM #	21	21	18	19	26
DISPLACEMENT	STANDARD ROTOR KIT	FREETURN ROTOR KIT	DRIVE LINK KIT	DRIVE LINK SPACER KIT	BOLT SET KIT
120	500087005	500087008	500014009	---	500445006
160	500137005	500137011	500014009	---	500445006
200	500167004	500167011	500014009	500018075	500445012
230	500147002	500147004	500014009	500018185	500445014
260	500227000	500227004	500014009	500018076	500445014
300	500247005	500247011	500014007	---	500445018
350	500207000	500207004	500014008	500018076	500445026
375	500307005	500307011	500014008	---	500445024
470	500357003	500357005	500014008	500018076	500445026
540	500407005	500407011	500014008	500018077	500445032
750	500607005	500607011	500014008	500018078	500445045

HOUSING KITS

(EXPLODED VIEW ITEM #16)

STANDARD HOUSING KITS INCLUDE BEARINGS (#12 & 17), DUST SEAL (#1) AND RETAINING SNAP RING (#11) INSTALLED IN THE HOUSING.

DESCRIPTION	HOUSING KIT	DESCRIPTION	HOUSING KIT
#W31- WHEEL MOUNT W/ 7/8" O-RING	500130928	#A51- 6-HOLE SAE "A" STYLE W/ 7/8" O-RING PORTS	500135228
#W38- WHEEL MOUNT W/1/2" BSP.F	500131428	#A58- 6-HOLE SAE "A" STYLE W/ 1/2" BSP.F PORTS	500135628
#W31- WHEEL MOUNT W/7/8" O-RING W/VALVE CAVITY	500133928	#A57- 6-HOLE SAE "A" STYLE W/ MANIFOLD PORTS	500135828
#W38- WHEEL MOUNT W/1/2" BSP.F W/VALVE CAVITY	500134428	#A51- 6-HOLE SAE "A" STYLE W 7/8" O-RING W/VAL. CAVITY	500138228

SHAFTS AND RELATED COMPONENTS KITS

SHAFT KITS COME WITH RELATED SHAFT COMPONENTS (i.e. keys, nuts, etc.)

TO ORDER INDIVIDUAL SHAFT COMPONENTS (i.e. keys, nuts, bolts, washers or wire rings) USE THE KIT NUMBER FOR EACH INDIVIDUAL PART.

EXPLODED VIEW ITEM #	27	28	29	NOT SHOWN	NOT SHOWN	NOT SHOWN
DESCRIPTION	SHAFT KIT	KEY KIT	NUT KIT	BOLT KIT	WASHER KIT	WIRE RING KIT
#25- 1-1/4" TAPERED	500011302	500449101		---	---	---
#07- 1-1/4" STRAIGHT	500011204	500449105		500449301	500449302	500449201
#09- 14 TOOTH SPLINE	500011107	---	SEE MISC.	---	---	500449201
#08- 32MM STRAIGHT	500011205	500449103	KITS LIST	---	---	500449201
#03- 6B SPLINE	500011602	---	ABOVE	---	---	---
#15- 1" STRAIGHT	500011206	500449100		---	---	---