

CENTRAL HYDRAULICS INC.

•Daytona Beach •Cocoa •Leesburg •Ocala •Tampa 1-800-264-9571

AC HYDRAULIC POWER UNITS

Auto Hoist

•AC-10AH •AC-10FP-A

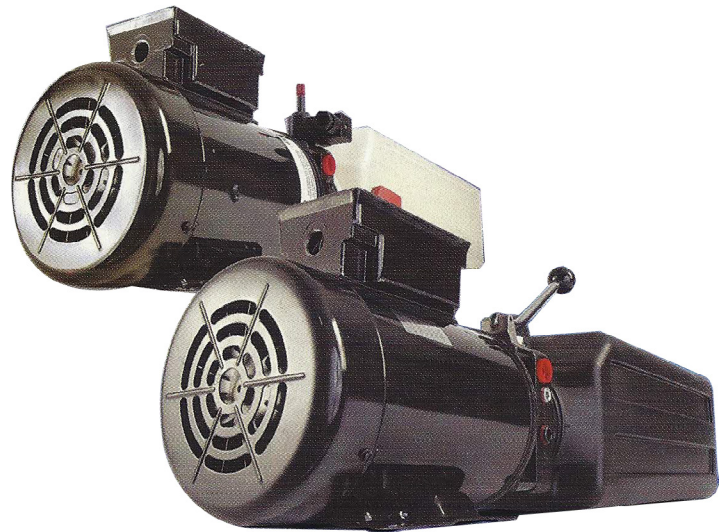
Power Up Button/
Gravity Down Handle

AC-10AH 2-POST

230VAC 2hp 1ph Hoist 1.82gpm
2750 psi 4gal verticle tank down

AC-10FP-A 4-POST

230VAC 3hp 1ph Hoist 2.82gpm
2450 psi 6.3gal verticle tank down



This power unit is designed specifically for use on 2 and 4 post auto hoists. This is for raise-hold-lower of the lift, with manual control of the lowering speed. A push-button, mounted on the unit, starts the motor to raise the lift. The unit features a fixed relief valve, so the lift cannot be overloaded, but (depending on cylinder size) can be used on most 7000 to 9000 lbs. capacity lifts.

SPX **STONE**

CENTRAL HYDRAULICS INC.

•Daytona Beach •Cocoa •Leesburg •Ocala •Tampa 1-800-264-9571

AC HYDRAULIC POWER UNITS

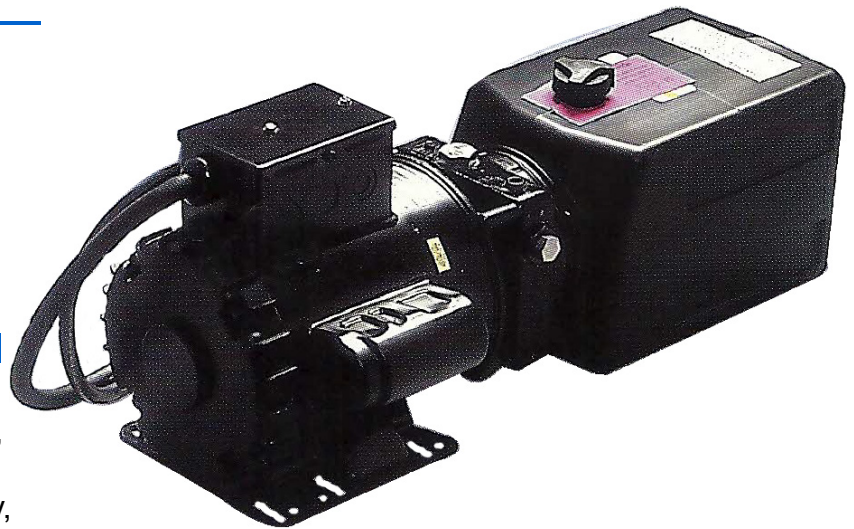
Auto Hoist for Tire Changer

•AC-10TC

AC-10TC

115v AC 1PH Auto Hoist for Tire Changer
Power Up/Gravity Down

3/4HP 115 VAC
1.5 gal Tank is standard.
Fixed relief set at 2300 psi.
#6 ORB 9/16"-18 port
.73 gpm



This power unit is designed for smaller, low-rise auto hoists and can be mounted either horizontally or vertically, operating on AC power. A push button on the motor starts the unit to raise the vehicle on the lift. To lower, a manually operated cartridge style release valve is used for fingertip control of lowering speed.



SPX **STONE**

CENTRAL HYDRAULICS INC.

•Daytona Beach •Cocoa •Leesburg •Ocala •Tampa 1-800-264-9571

DC HYDRAULIC POWER UNITS

Dump Trailer •DC-41DTC



DC-41DTC-20-25P-25

12V DC Solenoid Operated
Power Up/Power Down

2.5 gal Poly Tank is standard.
High Pressure relief set at 2500lbs.
Low Pressure relief set at 500lbs.
Complete w/ Electric Controller.
3/8" NPT Ports

This power unit is designed for use on a double acting dump trailer or dump bed application. Provides power lift-hold-power down operation. It can also be used to operate double-acting cylinder needs. All the Steel or Poly tank options are available in our stock.



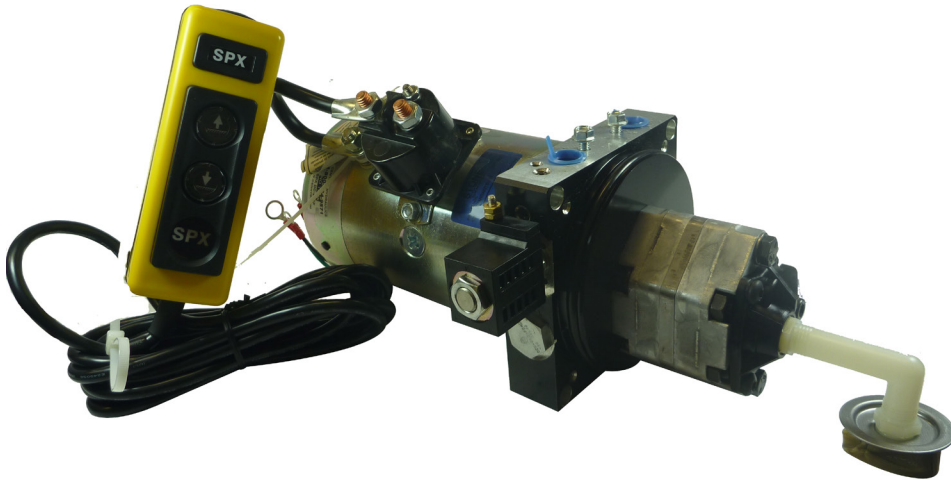
SPX **STONE**

CENTRAL HYDRAULICS INC.

•Daytona Beach •Cocoa •Leesburg •Ocala •Tampa 1-800-264-9571

DC HYDRAULIC POWER UNITS

•Tail Gate •Truck Mounted Crane •Dump Truck
•DC-20SF



DC-20SF (Base Unit)

12v DC Solenoid Operated
Power Up/Gravity Down

Controller Included
Adj. Relief set at 2500lbs.
3/8" NPT Ports
Tank Sold separately

The most common, rugged and reliable piece of truck equipment is the tail gate. The original Stone unit, now manufactured by SPX Fluid Power, has been used by manufacturers of this equipment since the industry began. Our 12V and 24V DC power packs come in manual or solenoid-operated versions for basic power up/gravity down tail gates. Power packs also available for cantilever and tuck-away designs of tail gates. Two button hand control is available for many DC lift/hold/lower applications. Various steel or poly tank sizes can be supplied to suit hydraulic cylinder capacities.



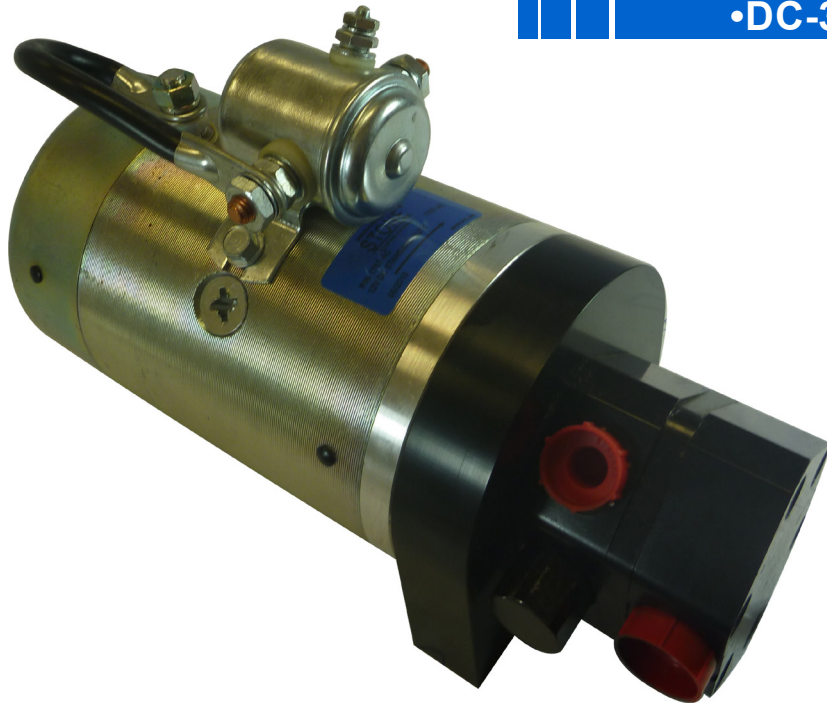
SPX **STONE**

CENTRAL HYDRAULICS INC.

•Daytona Beach •Cocoa •Leesburg •Ocala •Tampa 1-800-264-9571

DC HYDRAULIC POWER UNITS

Auxiliary Power Unit •DC-30APU



DC-30APU

12v DC 1T Std. Duty

Check and Adj. Relief set at 2500psi
3/4" SAE Side Inlet

9/16" SAE Side Outlet and Relief
Drain Ports

2.2 gpm @ 500 psi

1.7 gpm @ 1000 psi

1.4 gpm @ 2000 psi

The power unit is intended to be used with remote directional control valving and reservoir. This unit has an adjustable relief valve and outlet check valve. They are designed for applications such as backup (auxiliary) hydraulic power for truck mounted or the other mobile equipment, including emergency power steering for off-highway vehicles, elevated platforms, aerial buckets and manlifts. It can also be used to power material handling functions and other intermittent duty applications.


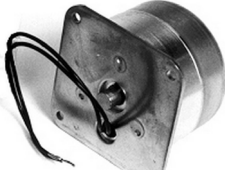
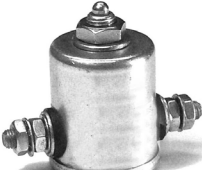



CENTRAL HYDRAULICS INC.

•Daytona Beach •Cocoa •Leesburg •Ocala •Tampa 1-800-264-9571

Power Units

Switches and Solenoids

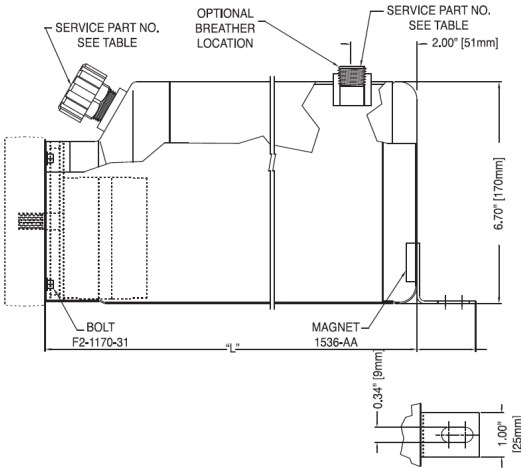
	APL2250 Push Button Start Switch	APL3020 V3 Post Positive grounded Prestolite Solenoid	
	APL2252 Canister Switch, Jam-type mount	APL3051 Smart Start Solenoid SPX EF-1070	
	APL3000 3 post, positive to excite, grounded solenoid with flat base.	APL3094 3 Post positive grounded solenoid Maxon	
	APL3004 4 post insulated solenoid with flat base	APL3390 Drain Solenoid	
	APL3010 3 post, positive to excite, grounded solenoid with curved base	BPL2250 Monarch Canister Switch Screw-type	
	APL3014 4 post insulated solenoid with curved base	BPL2254 Canister Switch for Condenser Valve	
		BPL3000 3 post, negative to excite, insulated solenoid with flat base	

CENTRAL HYDRAULICS INC.

•Daytona Beach •Cocoa •Leesburg •Ocala •Tampa 1-800-264-9571

RESERVOIRS

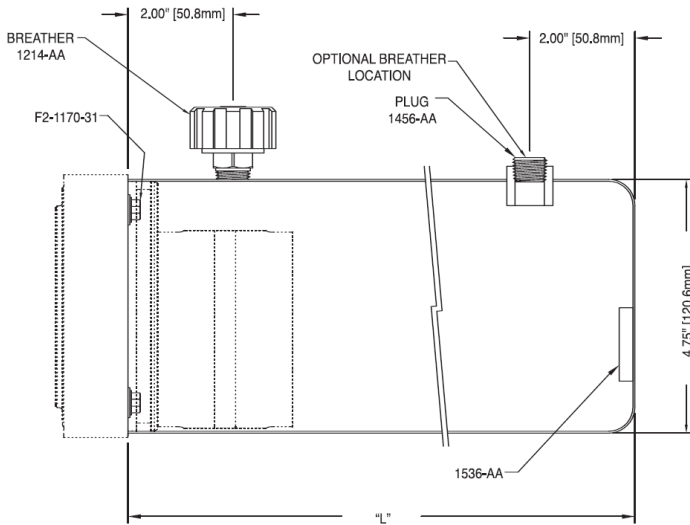
TRANSITION STYLE STEEL 6.7"/170MM



Kit #	Gallons	Length (in)	Useable Oil Capacity		Breather Part #	Plug Part #
			Vertical (ci)	Horizontal (ci)		
KR40	1.0	7.88	100	170	1214-AA	1465-AA
KR45	1.2	9.84	160	220	1214-AA	1465-AA
KR41	1.5	11.81	220	270	1683-AB	1896-AA
KR42	2.0	15.75	340	360	1683-AB	1896-AA
KR46	2.5	17.00	380	390	1683-AB	1896-AA
KR43	3.0	21.65	520	500	1683-AB	1896-AA
KR44	4.0	26.00	650	600	1683-AB	1896-AA

Foot included on 1.5 gallon and larger.

ROUND STEEL 4.75"/120MM



Kit #	Quarts	Length (in)	Useable Oil Capacity	
			Vertical (ci)	Horizontal (ci)
KR12	2	8.5	85	90
KR14	3	12.00	138	135
KR15	4	14.50	165	161

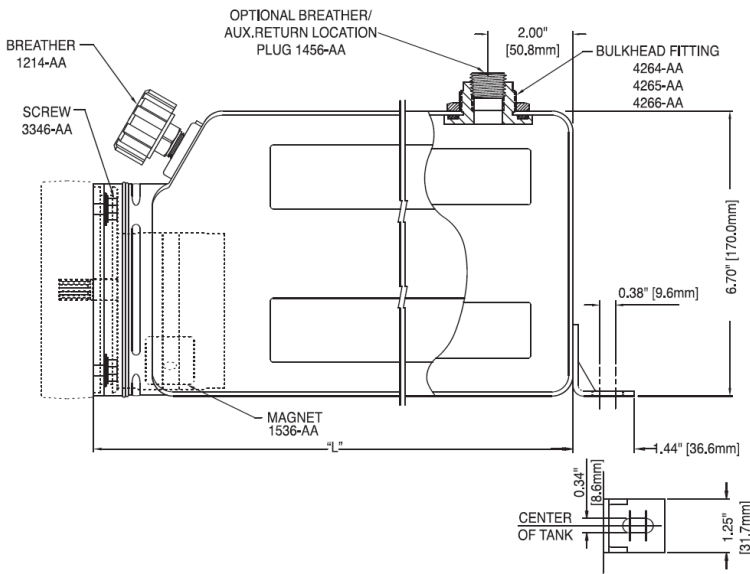
SPX **STONE**

CENTRAL HYDRAULICS INC.

•Daytona Beach •Cocoa •Leesburg •Ocala •Tampa 1-800-264-9571

RESERVOIRS

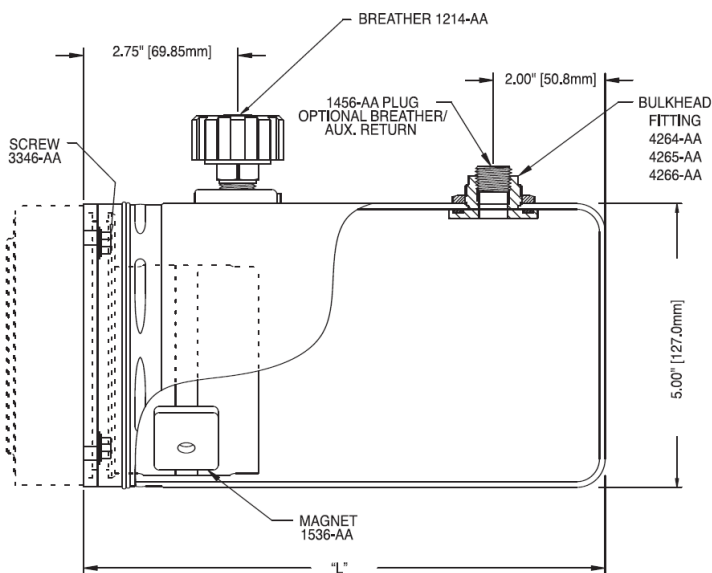
OFFSET PLASTIC 6.7"/170MM



Kit #	Gallons	Length (in)	Useable Oil Capacity	
			Vertical (ci)	Horizontal (ci)
KR50	1.0	7.50	120	186
KR55	1.2	9.00	180	230
KR51	1.5	11.00	260	286
KR52	2.0	13.00	340	345
KR56	2.5	15.00	420	400
KR53	3.0	20.00	620	540
KR54	4.0	26.00	860	715

Foot included on 1.5 gallon and larger.

SQUARE PLASTIC 5.0"/127MM



Kit #	Quarts	Length (in)	Useable Oil Capacity	
			Vertical (ci)	Horizontal (ci)
KR22	2	8.5	83	100
KR24	3	11.00	138	130
KR25	4	14.00	200	175

