

DELTROL

fluid products
DIVISION OF DELTROL CORP 



Cartridge Valves

Spool and
Poppet types



CENTRAL HYDRAULICS INC.

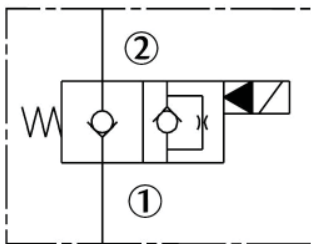
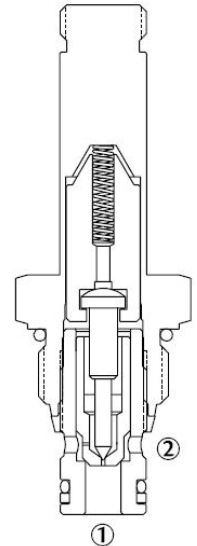
•Daytona Beach •Cocoa •Leesburg •Ocala •Tampa 1-800-264-9571



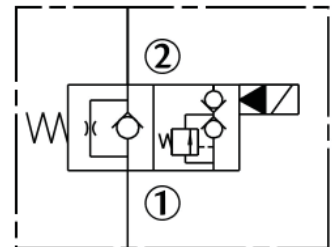
2-Way 2-Position Cartridge Valves

Poppet Type
(10v 12v 110v 220v)

Part #	Description
<p>NORMALLY CLOSED</p> <p>DSV-080-2NCP-N Up to 5gpm</p> <p>DSV2-100-2NCP-N Up to 16gpm</p>	<p>A cartridge valve designed with positive shut off to be used in load holding applications.</p> <p>OPERATION</p> <p>When <i>de-energized</i>, the DSV-2NCP acts as a check valve, allowing flow from ① to ②, while blocking flow from ② to ①.</p> <p>When <i>energized</i>, the poppet lifts to open the ② to ① flow path.</p>



DELTROL
fluid products
DIVISION OF DELTROL CORP. 



Part #	Description
<p>NORMALLY OPEN</p> <p>DSV-080-2NOP-N Up to 5gpm</p> <p>DSV2-100-2NOP-N Up to 16gpm</p>	<p>A cartridge valve designed with positive shut off to be used in load holding applications.</p> <p>OPERATION</p> <p>When <i>de-energized</i>, the DSV-2NOP is open to allow flow from ② to ①.</p> <p>When <i>energized</i>, the poppet closes to block the flow from ② to ①. In this condition, the cartridge allows reverse flow from ① to ②.</p>

CENTRAL HYDRAULICS INC.

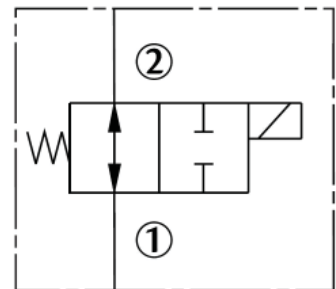
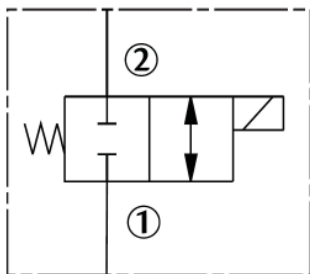
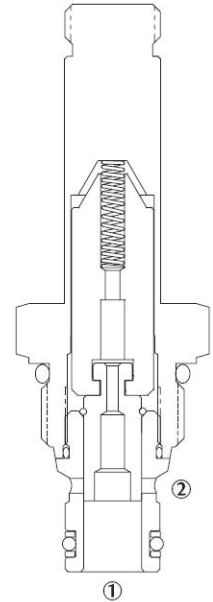
•Daytona Beach •Cocoa •Leesburg •Ocala •Tampa 1-800-264-9571



2-Way 2-Position Cartridge Valves

Spool Type
(10v 12v 110v 220v)

Part #	Description
NORMALLY CLOSED	A cartridge valve designed to operate as a bidirectional blocking valve.
DSV2-080-2NCS-N Up to 3gpm	OPERATION When <i>de-energized</i> , the DSV-2NCS blocks flow in both directions.
DSV2-100-2NCS-N Up to 3gpm	When <i>energized</i> , the cartridge's spool shifts to allow flow in either direction.



Part #	Description
NORMALLY OPEN	A cartridge valve designed to operate as a bidirectional blocking valve.
DSV2-080-2NOS-N Up to 3gpm	OPERATION When <i>de-energized</i> , the DSV-2NOS allows flow in both directions.
DSV2-100-2NOS-N Up to 6gpm	When <i>energized</i> , the cartridge's spool shifts to block flow in either direction.

CENTRAL HYDRAULICS INC.

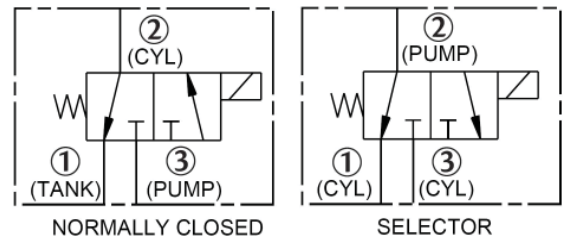
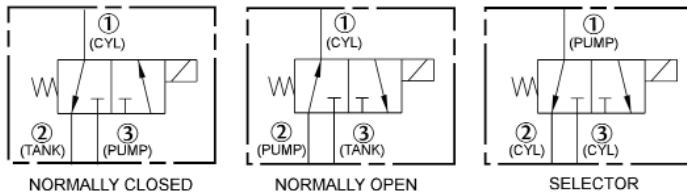
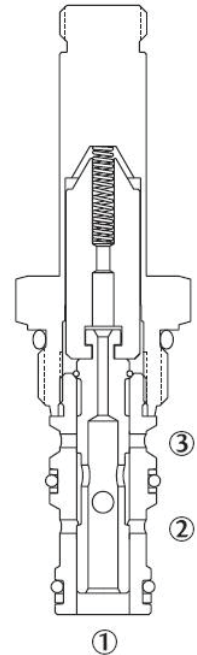
•Daytona Beach •Cocoa •Leesburg •Ocala •Tampa 1-800-264-9571



3-Way 2-Position Cartridge Valves

Spool Type
(10v 12v 110v 220v)

Part #	Description
DSV2-080-3-N Up to 4gpm	<p>A cartridge valve designed as a three-way, spool-type, directional control valve.</p> <p>OPERATION</p> <p>When <i>de-energized</i>, the DSV-3 allows flow between ② and ①, while blocking flow at ③.</p> <p>When <i>energized</i>, the cartridge's spool shifts to allow flow between ① and ③ while blocking flow at ②.</p>
DSV2-100-3-N Up to 6gpm	



Part #	Description
DSV2-080-3B-N Up to 5gpm	<p>A cartridge valve designed as a three-way, spool-type, directional control valve.</p> <p>OPERATION</p> <p>When <i>de-energized</i>, the DSV-3B allows flow between ② and ①, while blocking flow at ③.</p> <p>When <i>energized</i>, the cartridge's spool shifts to allow flow between ② and ③ while blocking flow at ①.</p>
DSV2-100-3B-N Up to 6gpm	

CENTRAL HYDRAULICS INC.

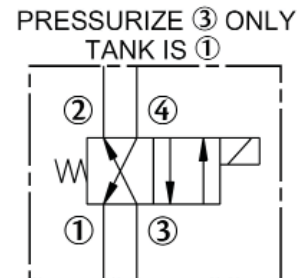
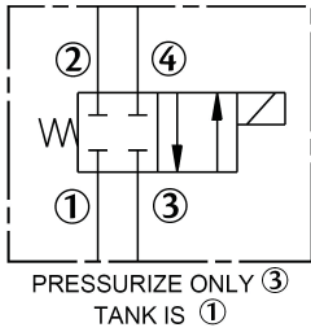
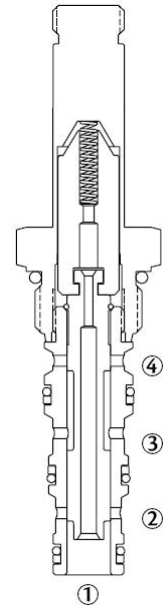
•Daytona Beach •Cocoa •Leesburg •Ocala •Tampa 1-800-264-9571



4-Way 2-Position Cartridge Valves

Spool Type
(10v 12v 110v 220v)

Part #	Description
NORMALLY CLOSED	Spool-type, directional control valve with all ports normally-closed
DSV2-080-4NC-N Up to 3gpm	OPERATION When <i>de-energized</i> , the DSV2-4NC flow paths are blocked.
DSV2-100-4NC-N Up to 6gpm	When <i>energized</i> , the cartridge's spool shifts and allows flow from ③ to ④ and from ② to ①.



Part #	Description
NORMALLY CLOSED	Spool-type, directional control valve with all ports normally-open.
DSV2-080-4CO-N Up to 3gpm	OPERATION When <i>de-energized</i> , the DSV2-4CO allows flow from ③ to ②, and from ④ to ①.
DSV2-100-4CO-N Up to 6gpm	When <i>energized</i> , the cartridge's spool shifts to allow flow between ③ and ④ and from ② to ①.

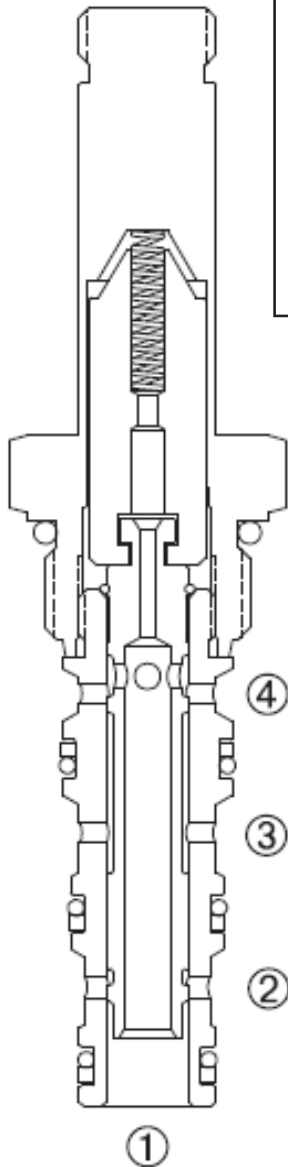
CENTRAL HYDRAULICS INC.

•Daytona Beach •Cocoa •Leesburg •Ocala •Tampa 1-800-264-9571

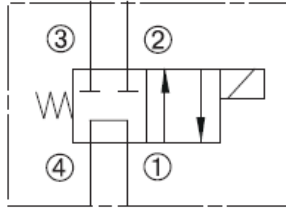


4-Way 2-Position Cartridge Valves

Spool Type
(10v 12v 110v 220v)



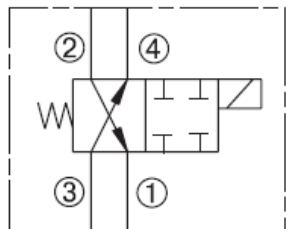
Part Number	Description
DSV2-080-4TC-N Up to 3gpm	<p>Spool-type, directional control valve with two ports normally-closed and two ports normally-open`</p> <p>OPERATION</p> <p>When <i>de-energized</i>, the DSV2-4TC allows flow from ④ to ① and is blocked at ② and ③.</p> <p>When <i>energized</i>, the cartridge's spool shifts and allows flow from ④ to ③ and from ② to ① .</p>
DSV2-100-4TC-N Up to 6gpm	



PRESSURIZE ④ ONLY
TANK IS ①

DELTROL

Part Number	Description
DSV2-080-4NO-N Up to 3gpm	<p>A cartridge valve designed as a four-way, spool-type, directional control valve with all ports normally-open. This valve is commonly used in a circuit to allow flow to and from a double-acting cylinder or motor.</p> <p>OPERATION</p> <p>When <i>energized</i>, the spool shifts and all flow paths are blocked. When <i>de-energized</i>, the cartridge's spool allows flow from ③ to ④ and from ② and ①.</p>
DSV2-100-4NO-N Up to 3gpm	



PRESSURIZE ③ ONLY
TANK IS ①

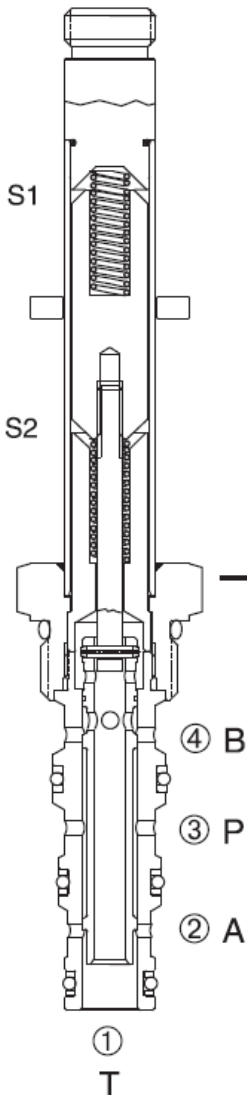
fluid products
DIVISION OF DELTROL CORP

CENTRAL HYDRAULICS INC.

•Daytona Beach •Cocoa •Leesburg •Ocala •Tampa 1-800-264-9571



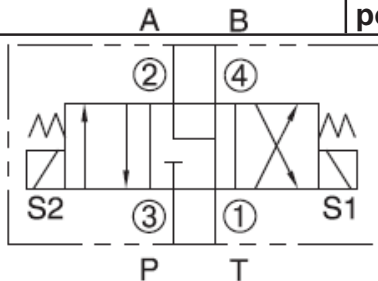
4-Way 3-Position Motor Center or Tandem Center **Spool Type** Cartridge Valves



Part #	Description
DSV-080-34M-N Up to 3.5gpm	A cartridge valve designed as a three position, four-way solenoid valve.
DSV-100-34M-N Up to 6gpm	A cartridge valve designed as a three position, four-way solenoid valve.

OPERATION

When *de-energized*, the valve allows flow between the ①, ②, and ④ ports with the ③ port blocked. When the upper solenoid (S1) is *energized*, the valve allows flow between ② and ① ports and the ③ and ④ ports. When the lower solenoid (S2) is *energized*, the valve allows flow between the ④ and ① ports and the ③ and ② ports.

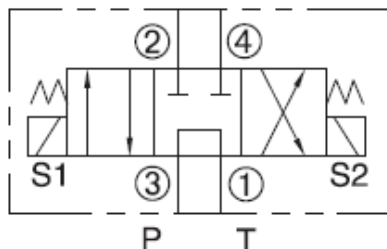


DELTROL

Part #	Description
DSV-080-34T-N Up to 3gpm	A cartridge valve designed as a three position, four-way solenoid valve.
DSV-100-34T-N Up to 5gpm	A cartridge valve designed as a three position, four-way solenoid valve.

OPERATION

When *de-energized*, the valve allows flow between the ③ and ① ports with ports ② and ④ blocked. When the lower solenoid (S2) is *energized*, the valve allows flow between the ① and ② ports and the ③ and ④ ports. When the upper (S1) solenoid is *energized*, the valve allows flow between the ① and ④ ports and the ② and ③ ports.



fluid products
DIVISION OF DELTROL CORP

CENTRAL HYDRAULICS INC.

•Daytona Beach •Cocoa •Leesburg •Ocala •Tampa 1-800-264-9571



4-Way 3-Position Closed Center or Open Center Cartridge Valves

Spool Type

Part #	Description
DSV-080-34C-N Up to 3gpm	A cartridge valve designed as a three position, four-way solenoid valve. OPERATION When <i>de-energized</i> , the valve prevents flow at all ports. When the upper solenoid (S1) is <i>energized</i> , the valve allows flow between the ② and ① ports and the ③ and ④ ports. When the lower solenoid (S2) is <i>energized</i> , the valve allows flow between the ④ and ① ports and the ③ and ② ports.
DSV-100-34C-N Up to 6gpm	

DELTROL

Part #	Description
DSV-080-34O-N Up to 2gpm	A cartridge valve designed as a three position, four-way solenoid valve. OPERATION When <i>de-energized</i> , the valve allows flow at all ports. When the upper solenoid (S1) is <i>energized</i> , the valve allows flow between the ③ and ② ports and the ④ and ① ports. When the lower solenoid (S2) is <i>energized</i> , the valve allows flow between the ③ and ④ ports and the ② and ① ports.
DSV-100-34O-N Up to 3gpm	

