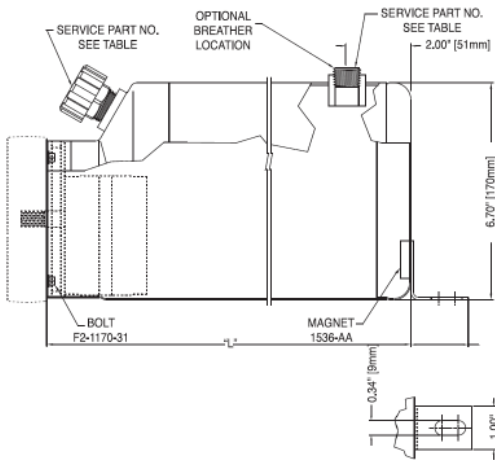


CENTRAL HYDRAULICS INC.

•Daytona Beach •Cocoa •Leesburg •Ocala •Tampa 1-800-264-9571

RESERVOIRS

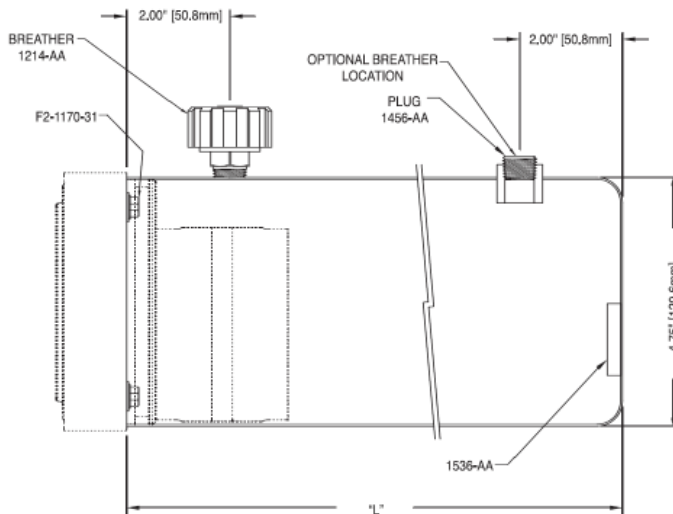
TRANSITION STYLE STEEL 6.7"/170MM



Kit #	Gallons	Length (in)	Useable Oil Capacity		Breather Part #	Plug Part #
			Vertical (ci)	Horizontal (ci)		
KR40	1.0	7.88	100	170	1214-AA	1465-AA
KR45	1.2	9.84	160	220	1214-AA	1465-AA
KR41	1.5	11.81	220	270	1683-AB	1896-AA
KR42	2.0	15.75	340	360	1683-AB	1896-AA
KR46	2.5	17.00	380	390	1683-AB	1896-AA
KR43	3.0	21.65	520	500	1683-AB	1896-AA
KR44	4.0	26.00	650	600	1683-AB	1896-AA

Foot included on 1.5 gallon and larger.

ROUND STEEL 4.75"/120MM



Kit #	Quarts	Length (in)	Useable Oil Capacity	
			Vertical (ci)	Horizontal (ci)
KR12	2	8.5	85	90
KR14	3	12.00	138	135
KR15	4	14.50	165	161



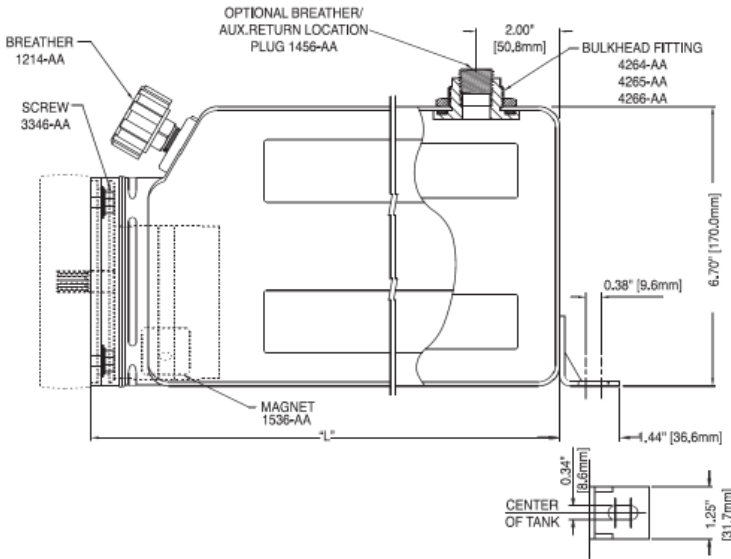
Fax: 386-257-5728 Tele: 1-800-264-9571 sales@centralhydraulics.com www.centralhydraulics.com

CENTRAL HYDRAULICS INC.

•Daytona Beach •Cocoa •Leesburg •Ocala •Tampa 1-800-264-9571

RESERVOIRS

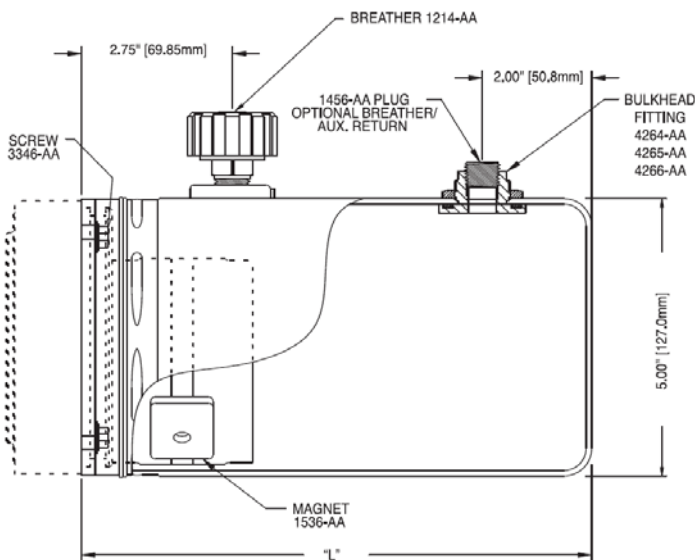
OFFSET PLASTIC 6.7"/170MM



Kit #	Gallons	Length (in)	Useable Oil Capacity	
			Vertical (ci)	Horizontal (ci)
KR50	1.0	7.50	120	186
KR55	1.2	9.00	180	230
KR51	1.5	11.00	260	286
KR52	2.0	13.00	340	345
KR56	2.5	15.00	420	400
KR53	3.0	20.00	620	540
KR54	4.0	26.00	860	715

Foot included on 1.5 gallon and larger.

SQUARE PLASTIC 5.0"/127MM



Kit #	Quarts	Length (in)	Useable Oil Capacity	
			Vertical (ci)	Horizontal (ci)
KR22	2	8.5	83	100
KR24	3	11.00	138	130
KR25	4	14.00	200	175

