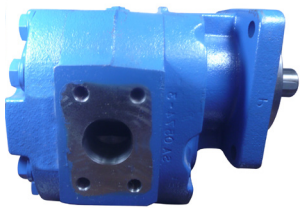


Central Hydraulics, Inc.

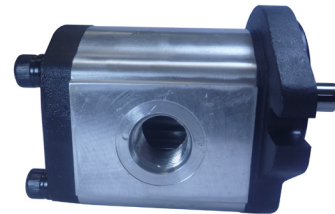
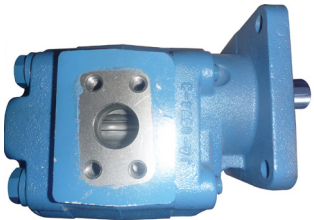
Daytona Beach, FL
1580 North Nova Rd, 32117

386-253-2568

1-800-264-9571



Refuse Parts and Accessories Catalog

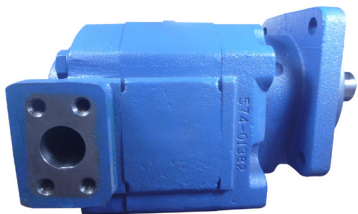


Ocala 352-840-0842

Cocoa 321-639-9967

Leesburg 352-323-8008

Tampa 813-242-4673



239-F-04

Central Hydraulics Inc.

EAT-N
Aeroquip



Specializing in sales and repairs
of hydraulic hose, pumps, motors,
cylinders, valves, & components



MANUFACTURERS

AEROQUIP
APSCO INC
ALEMITE
BAND-IT
BOSTON
BRAND HYDRAULICS
BUCHER
BVA HYDRAULICS
CIM-TEK FILTERS
CROSS MFG
CURTIS TOLEDO
DAMAN
DELTRON
DIXON
DK-LOK
DONALDSON
DYNAMIC
ENERGY MFG
FABCO-AIR
FILL-RITE
FOSTER
GRACO
HANNAY
HEDLAND & FLO-TECH
HOSTRACT REELS
HUSKY
HYDRA-MOUNT
HYDRAULICS INC
HYVAIR
KURIYAMA - PIRANHA
MILTON INDUSTRIES
NYCOIL - RECTUS - TEMA
PERMCO
REVCO WORLD WIDE
SPX STONE
STRIDE TOOL
STUCCHI
SUPER SWIVELS
SUTTNER
WHITE DRIVE PRODUCTS
YUKEN
ZERO-MAX/ HELLAND

PRODUCTS OFFERED

Hose, Fittings, Adapters, Flexmaster Joints
Pneumatic Valves - Electric and Manual
Lube Equipment & Fluid Handling Products
Punch Type Clamps & Tools
Air, Water, Fuel, Chemical Hose
Valves, Stackable, Mono Block
Monoblock & Sectional Directional Control Valves
High Pressure Pumps & Rams to 10k psi
Fuel Filtration Products
Cylinders, Valves, Gear Pumps & Motors
Hose Cut-Off Machines
Hydraulic Valve Manifolds
Needle, Flow Control, Check & Cartridge Valves
Valves, Couplings, Camlocks
Instrumentation Fittings & Valves
Hydraulic Filters & Components
Pressure Gages, High Pressure Ball Valves
Hydraulic Control Valves
Filters Regulators & Lubricators
Fuel Transfer Pumps & Meters
Water & Air Disconnects
Bulk Fluid and Grease Dispensing Air Pumps
Best Quality Hose Reels for Industry
Testers & Flow Meters for Liquid, Air & Compressed Gases
Economical Hose Reels
Fuel Nozzles & Accessories
Pump/Motor Mounting Brackets
Full Time Hydraulic 3000psi Live Swivels
NFPA Valves and Accessories
Sewer Cleaning Hose
Air Accessories & Fittings
European Quick-Connect Couplings
Gear Pump, Motors, & Dump Pumps
Jaw-Type Couplings(L095, L100, L110, L150)
AC/DC Hydraulic Power Units
Professional Tube Bending & Flaring Tools
Hydraulic Quick-Disconnect Couplers
Live Swivels Oil, Water & Air up to 5000psi
Pressure Washer Accessories
LSHT Motors and Brakes
Solenoid Operated Directional Control Valves
Overhung Load Adapters



Kuriyama of America, Inc.



Central Hydraulics Inc.

386-253-2568

1580 North Nova Road
Daytona Beach, FL 32117

www.Cenhyd.com
Tampa Ocala Leesburg Cocoa

CENTRAL HYDRAULICS INC.

•Daytona Beach •Cocoa •Leesburg •Ocala •Tampa 1-800-264-9571

Refuse Pumps



Heil & McNelius

Front Mount Pump

Our Part# CEC1950-06

CENTRAL HYDRAULICS INC.

•Daytona Beach •Cocoa •Leesburg •Ocala •Tampa 1-800-264-9571

Refuse Pumps



Roll Off PTO Pump

Our Part# CEC1950-02 with 7/8 13 Tooth shaft

Our Part# CEC1950-03 with 1" 15 Tooth shaft

CENTRAL HYDRAULICS INC.

•Daytona Beach •Cocoa •Leesburg •Ocala •Tampa 1-800-264-9571

Refuse Pumps



Heil 5000

Front Mount Pump

Our Part# CEC1950-07

CENTRAL HYDRAULICS INC.

•Daytona Beach •Cocoa •Leesburg •Ocala •Tampa 1-800-264-9571

Refuse Pumps



New Style Heil

Front Mount Pump

Our Part# CEC1950-05

CENTRAL HYDRAULICS INC.

•Daytona Beach •Cocoa •Leesburg •Ocala •Tampa 1-800-264-9571

Refuse Pumps



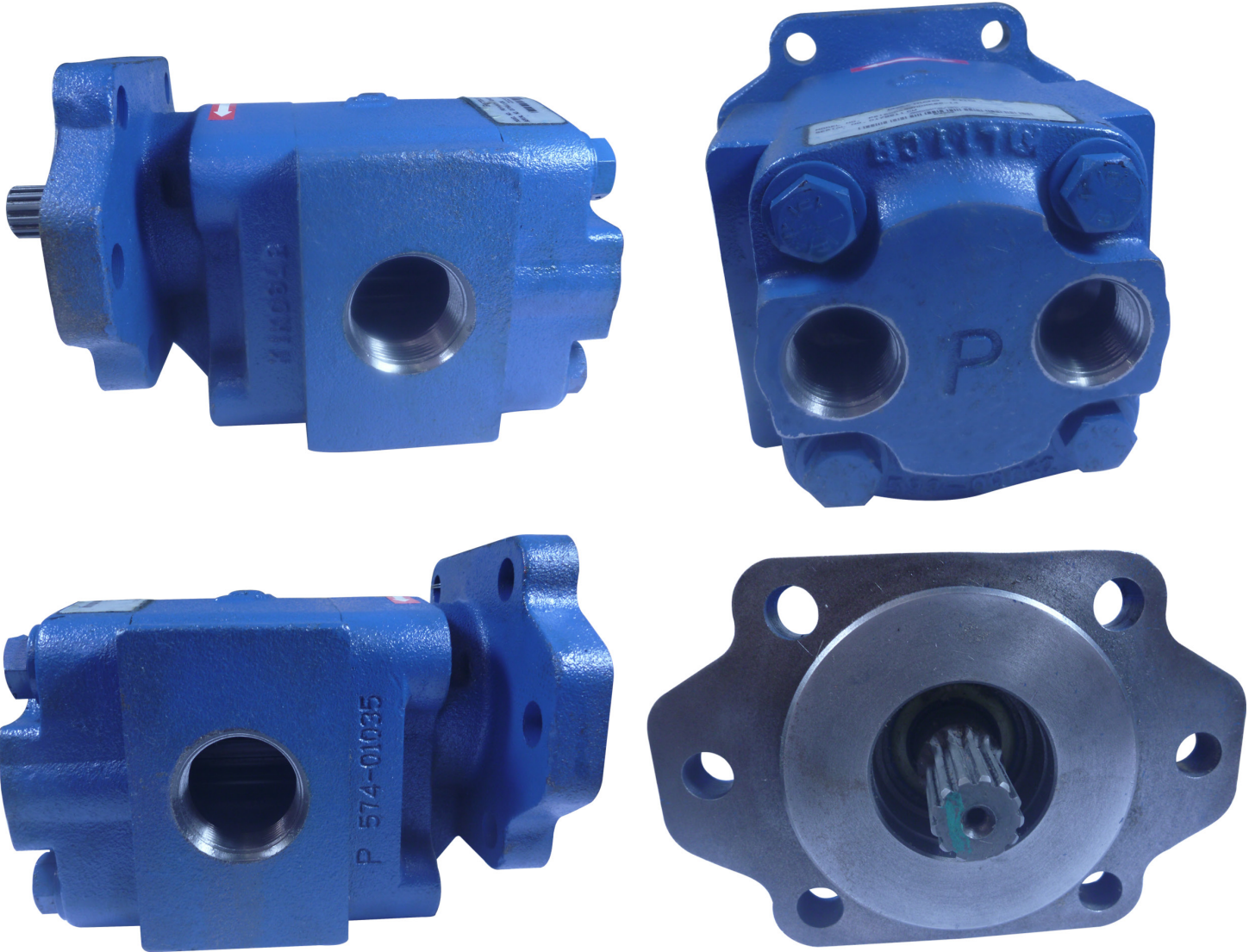
McNelius Front Mount Pump

Our Part# CEC1950-04

CENTRAL HYDRAULICS INC.

•Daytona Beach •Cocoa •Leesburg •Ocala •Tampa 1-800-264-9571

Refuse Pumps



Labrie Recycle Pump

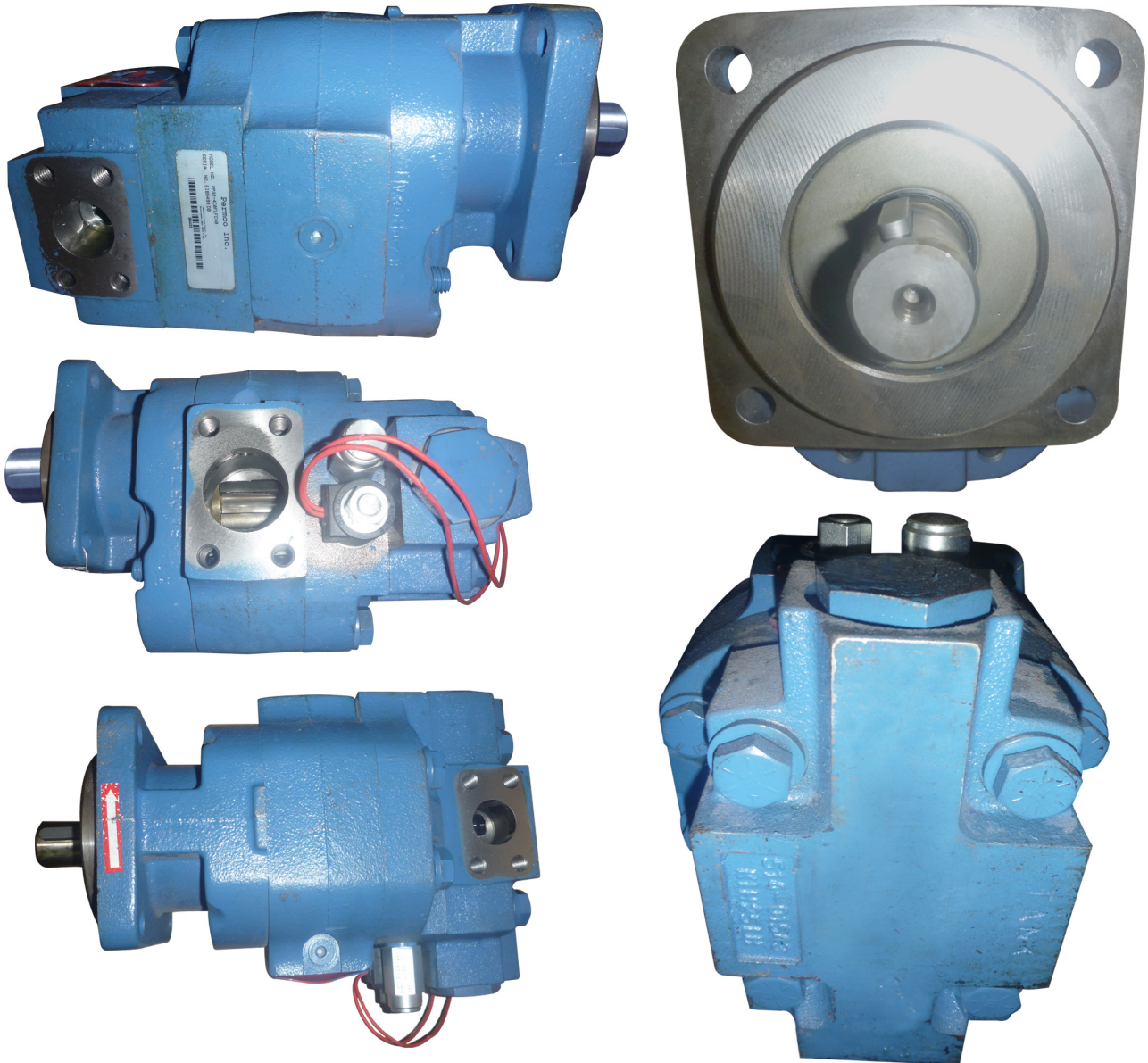
NON COMPACTION

Our Part# CEC1950-01

CENTRAL HYDRAULICS INC.

•Daytona Beach •Cocoa •Leesburg •Ocala •Tampa 1-800-264-9571

Refuse Pumps



Heil and New Way

Front Mount Pump

Our Part# Heil CEC1950-08

Our Part# New Way CEC1950-09

CENTRAL HYDRAULICS INC.

•Daytona Beach •Cocoa •Leesburg •Ocala •Tampa 1-800-264-9571

Compactor Pumps



Compactor Power Pak Pump

Our Part# CEC1950-16

CENTRAL HYDRAULICS INC.

•Daytona Beach •Cocoa •Leesburg •Ocala •Tampa **1-800-264-9571**

Compactor Cylinders



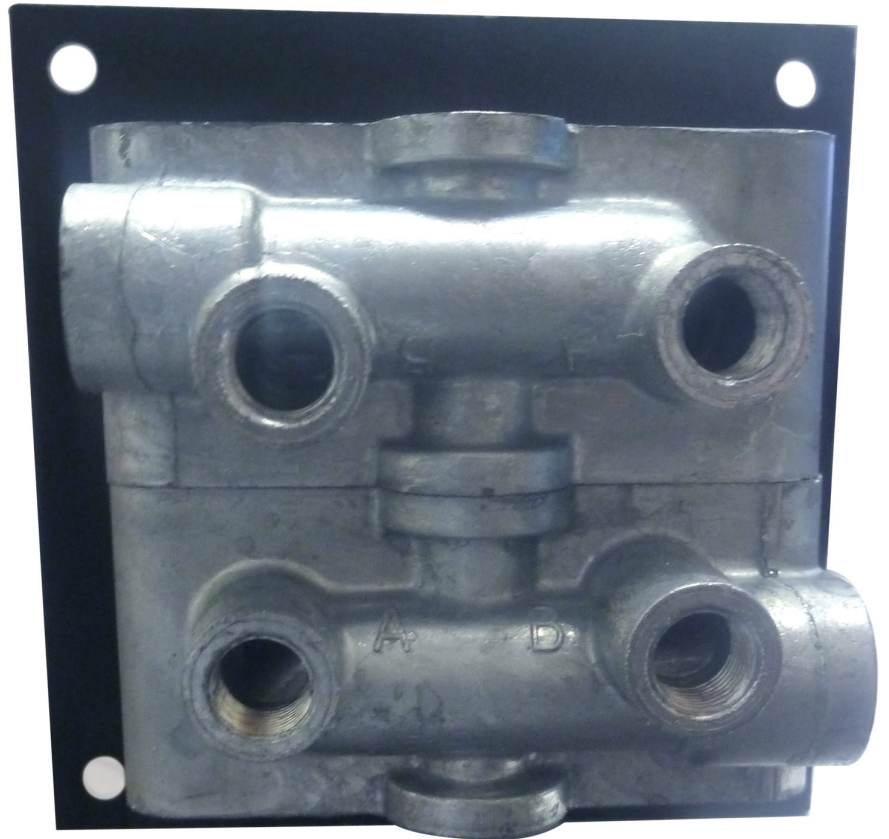
Compactor Cylinder Marathon Style

Our Part# CEC1950-17

CENTRAL HYDRAULICS INC.

•Daytona Beach •Cocoa •Leesburg •Ocala •Tampa 1-800-264-9571

Control Valves



Front Load Joystick

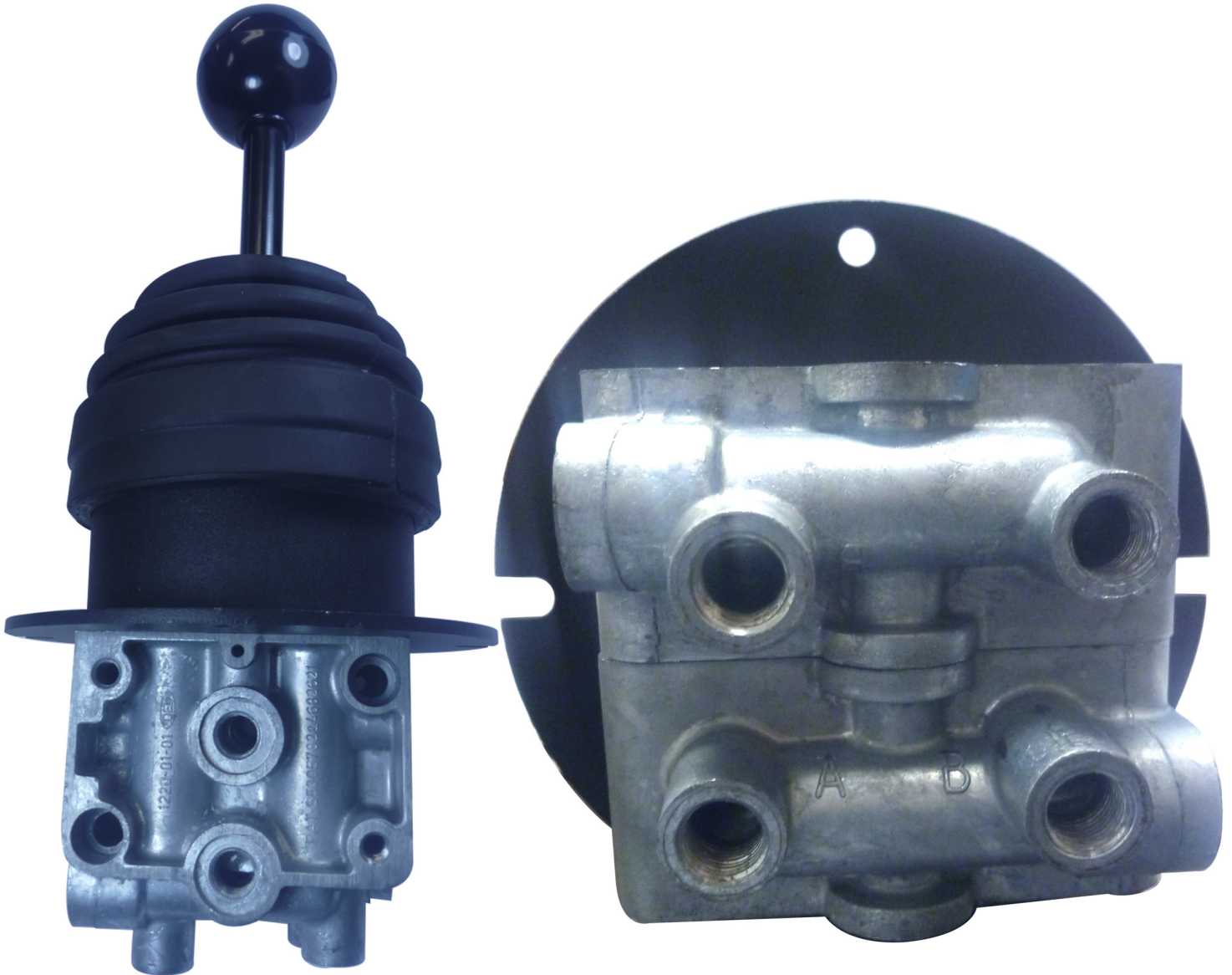
Square Mount

Our Part# CEC1950-10

CENTRAL HYDRAULICS INC.

•Daytona Beach •Cocoa •Leesburg •Ocala •Tampa 1-800-264-9571

Control Valves



Front Load Joystick

Round Mount

Our Part# CEC1950-11

CENTRAL HYDRAULICS INC.

•Daytona Beach •Cocoa •Leesburg •Ocala •Tampa 1-800-264-9571

Control Valves



Single Air Control Valve

Our Part# CEC1950-12

CENTRAL HYDRAULICS INC.

•Daytona Beach •Cocoa •Leesburg •Ocala •Tampa 1-800-264-9571

Control Valves



Double Air Control Valve

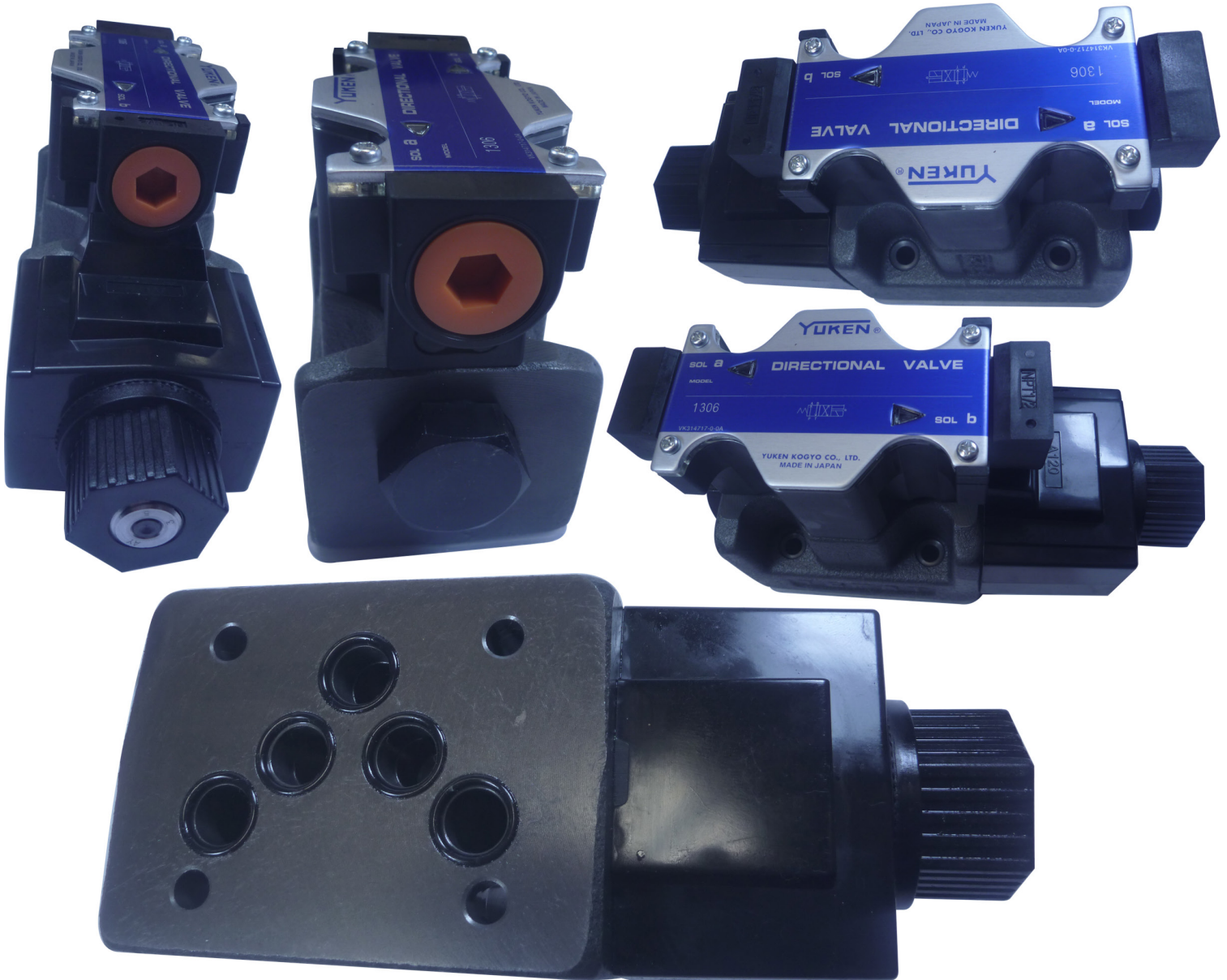
Roll Off and Front Load

Our Part# CEC1950-13

CENTRAL HYDRAULICS INC.

•Daytona Beach •Cocoa •Leesburg •Ocala •Tampa 1-800-264-9571

Solenoid Valves



Compactor Power Pak Valve Single Solenoid

Our Part# CEC1950-14

CENTRAL HYDRAULICS INC.

•Daytona Beach •Cocoa •Leesburg •Ocala •Tampa 1-800-264-9571

Solenoid Valves



Compactor Power Pak Valve

Double Solenoid

Our Part# CEC1950-15

CENTRAL HYDRAULICS INC.

•Daytona Beach •Cocoa •Leesburg •Ocala •Tampa 1-800-264-9571

OTS

O'BRIAN
ISO 9001 COMPANY
TARPING SYSTEMS
www.obriantarping.com

Works Smarter. Lasts Longer.
BEST VALUED AUTOMATIC TARPING SYSTEM.



- Pre-plumbed modular assembly for fast & easy installation.
- Our patented elbow upper arms enable the operator to place the roller on the rear of the container (10 to 50 cubic yard containers or lengths from 16' to 24'). This reduces tarp replacement and prevents debris blowing out the rear.
- All pivot points utilize a through nut with tap bolt for precise, even arm torque and incorporates multiple grease zerk fittings for proper pivot lubrication and maintenance.
- NO VALVING (diverters or divider combiners) required for proper arm sequencing or adjustable controls needed to control free-fall.
- O'Brian gives you control options (multi-lever or joystick).
- Approximate installed weight is 1050 lbs.

CENTRAL HYDRAULICS INC.

•Daytona Beach •Cocoa •Leesburg •Ocala •Tampa 1-800-264-9571

Tarping Equipment



DIABLO

- Arms completely below and in front of the container & compactors, virtually eliminating container inflicted tarper damage.
- Full adjustable, lightweight tarping system.
- Pivot point below the container.
- Enclosed rack and pinion with gears in a constant oil bath.
- Self-lubricating bushings at all pivot points
- Weighs only 850 lbs.
- 2 Year warranty

MAGNUM

- Industrial duty tarp system with 1/4" thick arms.
- Master/ Slave Hydraulic arm cylinders-No valving to maintain or manipulate.
- Fully adjustable, heavyweight tarping system
- Upper arms come standard with arm deflectors.
- Self lubricating buchings at all pivot points.
- Weighs 1250 lbs.
- 2 Year warranty.



OTS

- Entry level tarp system comparable in spec to a rack and pinion tarp system.
- Tarp arms utilize 3/16" tubing.
- Standard hydraulic arm cylinders (non-rephrasing).
- Fully adjustable tarping system.
- Grease points at each pivot point.
- Weighs in at 1030 lbs.
- 1 Year warranty.



CENTRAL HYDRAULICS INC.

•Daytona Beach •Cocoa •Leesburg •Ocala •Tampa 1-800-264-9571

High Pressure Hydraulic Swivel Joints

“S” Series/In-Line Swivel Joint

Sizes - 1/4” through 2” pipe size

Connection types - JIC, pipe, SAE O-Ring face seal (male & female)

Operating pressures - vacuum & to 3,000 PSI

Operating temperatures - 40° to 200° F



“9S” Series/90° Swivel Joint

Sizes - 1/4” through 2” pipe size

Connection types - JIC & O-Ring (male), pipe and SAE O-Ring face seal (male & female) & pipe union

Operating pressures - vacuum & to 3,000 PSI

Operating temperatures - 40° to 200° F



“9SS” Series/Dual Plane Swivel Joint

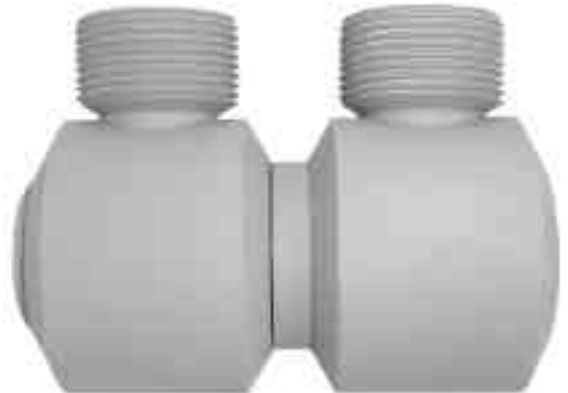
Sizes - 1/4” through 1 1/4” pipe size

Connection types - JIC & O-Ring (male), pipe & SAE

O-Ring face seal (male & female)

Operating Pressures - vacuum & to 3,000 PSI

Operating Temperatures - 40° to 200° F



“18S” Series/180° Swivel Joint

Sizes - 1/4” through 2” pipe size

Connection types - JIC (male), pipe & SAE O-Ring face seal (male & female) & pipe union

Operating pressures - vacuum & to 3,000 PSI

Operating temperatures - 40° to 200° F



CENTRAL HYDRAULICS INC.

•Daytona Beach •Cocoa •Leesburg •Ocala •Tampa 1-800-264-9571

Pump for Grease (120lbs)

50:1 For 120lb Containers

Air operated from 30psi to 140psi

Key Applications

High-pressure
grease dispense

Key Materials

- NLGI #00 Grease
- NLGI #0 Grease
- NLGI #1 Grease
- NLGI #2 Grease

Recommended For

- Service Shops
- Construction Equip.
Maintenance
- Service Shops
- Automotive Dealerships
- Fast Lubes
- Fleet



Perfect for high pressure grease dispense!

Graco's Fire-Ball pumps are built to last. For almost 50 years the Fire-Ball 300, 50:1 ratio has been a mainstay in the lubrication marketplace for its durability and long life. A package including a trusty Fire-Ball is sure to last!

Features and Benefits

- Corrosion-resistant design utilizes liquid salt nitriding, nickel plating, stainless steel, aluminum and chrome on key components for longer life.
- Few moving parts in the air motor assembly means less downtime and low repair cost.
- Displacement rods have minimal wear due to a proprietary Graco manufacturing process.
- Large air porting design provides efficient use of compressed air supply for continuous pump operation without icing.
- Thick cast aluminum air motor housing offers unmatched durability.

Container Size 120lbs	
Package No.	225014*
Pump No.	239887*
Dispense Kits	222072*
Fluid Hose	6ft x 1/4in*
Air Hose	6ft x 3/8in*
Follower Plate	220654*
Cover	204574*

* = included in package

Optional Accessories	
Air regulator with gauge	109075
Flex Hose for gun	5812
Control Handle	242056
Z Swivel	202577
Hose Reel	8078-B



Pro Shot Grease Gun
242056

Regulator & Gauge
109075

Z Swivel
202577

8078-B



with 1/4" x 50ft Grease
Hose Assy.

CENTRAL HYDRAULICS INC.

•Daytona Beach •Cocoa •Leesburg •Ocala •Tampa 1-800-264-9571

Pump for Grease(400lbs)

50:1 For 400lb Containers

Air operated from 30psi to 140psi

Key Applications

High-pressure
grease dispense

Key Materials

- NLGI #00 Grease
- NLGI #0 Grease
- NLGI #1 Grease
- NLGI #2 Grease

Recommended For

- Service Shops
- Construction Equip. Maintenance
- Service Shops
- Automotive Dealerships
- Fast Lubes
- Fleet



Perfect for high pressure grease dispense!

Graco's Fire-Ball pumps are built to last. For almost 50 years the Fire-Ball 300, 50:1 ratio has been a mainstay in the ubrication marketplace for its durability and long life. A package including a trusty Fire-Ball is sure to last!

Features and Benefits

- Corrosion-resistant design utilizes liquid salt nitriding, nickel plating, stainless steel, aluminum and chrome on key components for longer life.
- Few moving parts in the air motor assembly means less downtime and low repair cost.
- Displacement rods have minimal wear due to a proprietary Graco manufacturing process.
- Large air porting design provides efficient use of compressed air supply for continuous pump operation without icing.
- Thick cast aluminum air motor housing offers unmatched durability.

Container Size 400lbs	
Package No.	225016*
Pump No.	239888*
Dispense Kits	222072*
Fluid Hose	6ft x 1/4 in"
Air Hose	6ft x 3/8 in"
Follower Plate	223845*
Cover	200326*

* = included in package

Optional Accessories	
Air regulator with gauge	109075
Flex Hose for gun	5812
Control Handle	242056
Z Swivel	202577
Hose Reel	8078-B



Pro Shot Grease Gun
242056



Regulator & Gauge
109075



Z Swivel
202577



8078-B



Hose Reels

with 1/4" x 50ft Grease
Hose Assy.

CENTRAL HYDRAULICS INC.

•Daytona Beach •Cocoa •Leesburg •Ocala •Tampa 1-800-264-9571

Stub Pump for bulk oil

5:1 Air Operated from 40psi to 180psi

Key Applications

Fluid oil transfer to multiple metered dispense points.

Key Materials

- Motor oil
- Synthetic oil
- Hydraulic oil
- Gear oil
- ATF

Recommended For

- Service Shops
- Construction Equip. Maintenance
- Service Shops
- Fast Lubes
- Fleet

Perfect for high pressure fluid oil transfer in medium volume applications! This pump has been the 'crown jewel' of **Graco** since the 1950's and is the pump of choice in the most demanding environments.

Features and Benefits

- Corrosion-resistant design utilizes liquid salt nitriding, nickel plating, stainless steel, aluminum and chrome on key components for longer life.
- Few moving parts in the air motor assembly means less downtime and low repair cost.
- Displacement rods have minimal wear due to a proprietary Graco manufacturing process.
- Large air porting design provides efficient use of compressed air supply for continuous pump operation without icing.
- Thick cast aluminum air motor housing offers unmatched durability.



Stub Pump
203876 Fire-Ball 300,
5:1 pump universal

Suction Adapters
SVF HB150X100 1-1/2" to 1"
Bushing

LIN DTBUSHING Tank bushing
for telescoping tube
TUT 100KTG-8127 Telescoping
suction tube

Optional Accessories
109075 3/8" Air regulator/gauge
222308 2" bung adapter
238286 Complete Repair Kit



8078-D
with 1/2" x 50FT
Fluid Hose Assy.



Metered Valves



238461
Digital



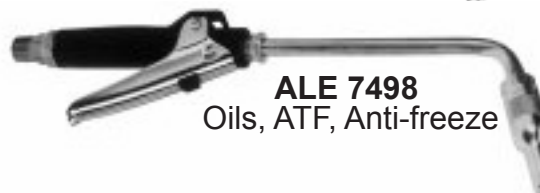
3685-F
Mechanical



ALE 7498-A
Oils, ATF, Anti-freeze



ALE 7492
Gear Oil



ALE 7498
Oils, ATF, Anti-freeze



222413
ATF

CENTRAL HYDRAULICS INC.

•Daytona Beach •Cocoa •Leesburg •Ocala •Tampa 1-800-264-9571

Pump for Grease (35lbs)

50:1 For 5 Gallon (35lbs) Container

Air operated from 30psi to 140psi

Key Applications

High-pressure grease dispense

Key Materials

- NLGI #00 Grease
- NLGI #0 Grease
- NLGI #1 Grease
- NLGI #2 Grease

Recommended For

- Service Shops
- Construction Equip. Maintenance
- Service Shops
- Automotive Dealerships
- Fast Lubes
- Fleet

Perfect for high pressure grease dispense!

Graco's Fire-Ball pumps are built to last. For almost 50 years the Fire-Ball 300, 50:1 ratio has been a mainstay in the lubrication marketplace for its durability and long life. A package including a trusty Fire-Ball is sure to last!

Features and Benefits

- Corrosion-resistant design utilizes liquid salt nitriding, nickel plating, stainless steel, aluminum and chrome on key components for longer life.
- Few moving parts in the air motor assembly means less downtime and low repair cost.
- Displacement rods have minimal wear due to a proprietary Graco manufacturing process.
- Large air porting design provides efficient use of compressed air supply for continuous pump operation without icing.
- Thick cast aluminum air motor housing offers unmatched durability.



Container Size 35lbs	
Package No.	222069*
Pump No.	239877*
Dispense Kits	222070*
Fluid Hose	12ft x 1.4in*
Control Handle	242056*
Z Swivel	202577*
Follower Plate	220653*
Cover	222059*

* = included in package

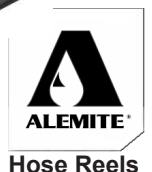
Optional Accessories	
Air regulator with gauge	109075
Flex Hose for gun	5812
Hose Reel	8078-B



Regulator & Gauge
109075

8078-B

with 1/4" x 50ft Grease
Hose Assy.



CENTRAL HYDRAULICS INC.

•Daytona Beach •Cocoa •Leesburg •Ocala •Tampa 1-800-264-9571

Oil and Grease Pumps

Oil Pump Specification

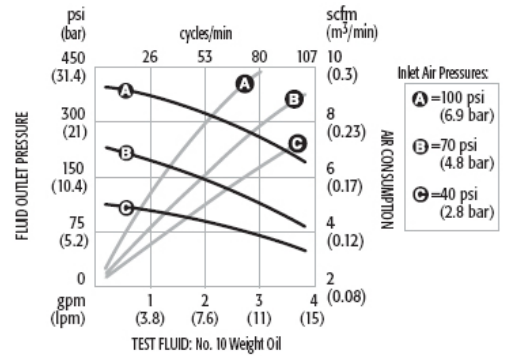
Fire-Ball 300, 5:1 Air-Operated Piston Pump

Cycles/gallon(cycles/liter).....	28.4(8.6)
Fluid flow @ 80cpm(gpm/lpm).....	2.8(9.3)
Maximum fluid pressure.....	900psi (62 bar, 6.2 MPa)
Air motor effective diameter.....	3in(76.2mm)
Air operating range.....	40-180 psi 2.8-12 bar (0.28-1.2 MPa)
Approx. air consumption and.....	27 scfm @ 3gpm
fluid flow @ 100psi air and 80 cpm	(0.765m ³ /min @ 115 lpm)
Wetted materials.....	Steel, polyurethane, aluminum, buna-N
Air inlet port size.....	3/8npt(f)
Fluid inlet port size.....	1-1/2 npt(f)
Fluid outlet port size.....	1/2 npt(f)
Instruction manual.....	309869

Typical Fluids Handled

*Grease up to NGLI #2

Pump Performance



Grease Pump Specification

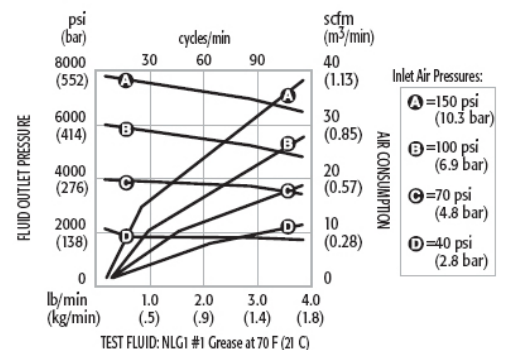
Fire-Ball 300, 50:1 Air-Operated Piston Pump

Maximum Fluid Pressure.....	8400psi (580 bar)
Air motor effective diameter.....	3in (76.2mm)
Operating range.....	30-140psi (3.0-9.7 bar)
Continuous duty flow rate.....	1.19lb/min
Approx. air consumption @100psi (7 bar).....	22.8cfm
Air inlet.....	3/8 npt(f)
Material outlet.....	1/4 npt(f)
Material inlet.....	slotted
Wetted Parts.....	CS, Delrin, Buna-N, Polyurethane
Instruction Manual.....	300883

Typical Fluids Handled

*Petroleum and synthetic based oils

Pump Performance



CENTRAL HYDRAULICS INC.

•Daytona Beach •Cocoa •Leesburg •Ocala •Tampa 1-800-264-9571

Pump for Oil/ATF/Gear Lube

Key Applications
Fluid oil transfer to multiple metered dispense points.

Key Materials

- Motor oil
- Synthetic oil
- Hydraulic oil
- Gear oil
- ATF

Recommended For

- Service Shops
- Construction Equip. Maintenance
- Service Shops
- Fast Lubes
- Fleet

5:1 55gal or 275gal Bung Mounted

Air operated from 40psi to 180psi



Perfect for high pressure fluid oil transfer in medium volume applications! This pump has been the 'crown jewel' of Graco since the 1950's and is the pump of choice in the most demanding environments.

Features and Benefits

- Corrosion-resistant design utilizes liquid salt nitriding, nickel plating, stainless steel, aluminum and chrome on key components for longer life.
- Few moving parts in the air motor assembly means less downtime and low repair cost.
- Displacement rods have minimal wear due to a proprietary Graco manufacturing process.
- Large air porting design provides efficient use of compressed air supply for continuous pump operation without icing.
- Thick cast aluminum air motor housing offers unmatched durability.

Non-Metered Valves



ALE 7492
Gear Oil



ALE 7498
Oils, ATF, Anti-freeze

ALE 7498-A
Oils, ATF, Anti-freeze



8078-D



Hose Reels

with 1/2" x 50FT
Fluid Hose Assy.

Metered Valves



ALE 3685-F
Mechanical



3670-B
Digital

* = included in package	Bung-Mounted pkg.	Bung-Mounted pkg.
Container Size	55gal	275gal
Package No.	225640*	225931*
Pump	204254*	222087
Dispense/Hose Fitting Kit	222063*	222063
Fluid Hose	6ft x 1/2in*	6ft x 1/2in
Air Hose	6ft x 3/8in*	6ft x 3/8in
Air Regulator <i>(with gauge)</i>	109075 <i>(optional)</i>	109075
Bung Adapter	222308*	222308

CENTRAL HYDRAULICS INC.

•Daytona Beach •Cocoa •Leesburg •Ocala •Tampa 1-800-264-9571

Diaphragm Pumps



1:1 Air Powered Double Diaphragm Pumps

1/4" 8301 Alemite 4gpm

3/8" 7gpm Free Flow Rate

Acetal Plastic Housing / Hytrel Diaphragm

Graco-Part # - D31255

1/2" 8322 Alemite 15gpm

Applications:

- Oil Transfer
- Water / Anti-freeze
- Windshield Washer Fluid

3/4" 16gpm Free Flow Rate

Aluminum Housing / Buna N Diaphragm

Graco- Part # - 241906

Applications:

- Oil Transfer
- Oil Evacuation
- Water / Anti-freeze
- Windshield Washer Fluid

1" 40gpm Free Flow Rate

Aluminum Housing / Hytrel Diaphragm

Graco- Part # - 647666

1" #8323 Alemite 45gpm Buna

Applications:

- Oil Transfer
- Oil Evacuation
- Water / Anti-freeze

1" 40gpm Free Flow Rate

Aluminum Housing / Hytrel Diaphragm

Graco- Part # - 647016

1" #8325 Alemite 45gpm Buna UL Listed

Applications:

- Diesel Fuel Transfer
- Oil Evacuation
- Water / Anti-freeze
- Harder Check Balls for Thermal Expansion

1.5" 90gpm Free Flow Rate

Aluminum Housing / Hytrel Diaphragm

Graco- Part # - DB3525

1" #8324 Alemite 106gpm Buna

Applications:

- Oil Transfer
- Oil Evacuation
- Water / Anti-freeze

Accessories:

55 Gallon Drum Adapter

DTBUSHING



Air Regulator

109075



Telescoping Suction Tube

100KTG8127

CENTRAL HYDRAULICS INC.

•Daytona Beach •Cocoa •Leesburg •Ocala •Tampa 1-800-264-9571

Fuel Nozzles and Accessories



337004
18 GPM
for 12v pumps



159404
10GPM
Unleaded



3/4" Automatic Shut-off



2273
Disposable
Breakaway



3360
Reusable
Breakaway



0350
3/4" Z
Swivel

1" Automatic Shut-off



173310
75GPM
Diesel 45psi



045704
15GPM
Unleaded



2276
Reusable
Breakaway



0087
1" Z Swivel

1.5" Automatic Shut-off



169010
100 GPM
45psi



3/4" or 1"
custom length
curb pump hoses

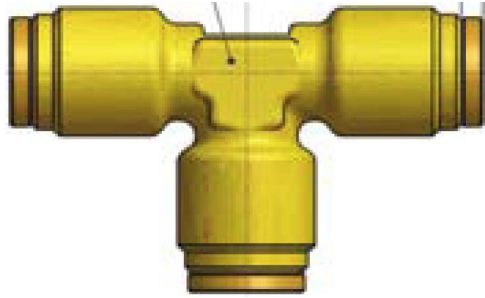


1", 1-1/4", 1-1/2"
Diesel fuel oil
hose with custom
lengths made.

CENTRAL HYDRAULICS INC.

•Daytona Beach •Cocoa •Leesburg •Ocala •Tampa 1-800-264-9571

DOT Air Brake Fittings



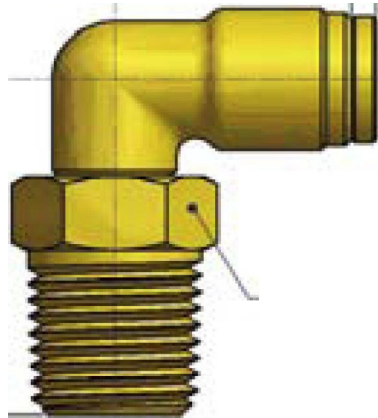
BRASS FITTINGS

“Push - To - Connect”

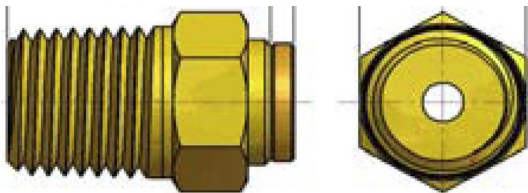
Part #	Tube O.D.
AQ64-DOT-4	1/4"
AQ64-DOT-6	3/8"
AQ64-DOT-8	1/2"



Part #	Tube O.D.
AQ62-DOT-4	1/4"
AQ62-DOT-6	3/8"
AQ62-DOT-8	1/2"



Part #	Tube O.D.	Thread
AQ69-DOTS-4X2	1/4"	1/8"
AQ69-DOTS-4X4	1/4"	1/4"
AQ69-DOTS-4X6	1/4"	3/8"
AQ69-DOTS-6X2	3/8"	1/8"
AQ69-DOTS-6X4	3/8"	1/4"
AQ69-DOTS-6X6	3/8"	3/8"
AQ69-DOTS-6X8	3/8"	1/2"
AQ69-DOTS-8X4	1/2"	1/4"
AQ69-DOTS-8X6	1/2"	3/8"
AQ69-DOTS-8X8	1/2"	1/2"
AQ69-DOTS-10X8	5/8"	1/2"



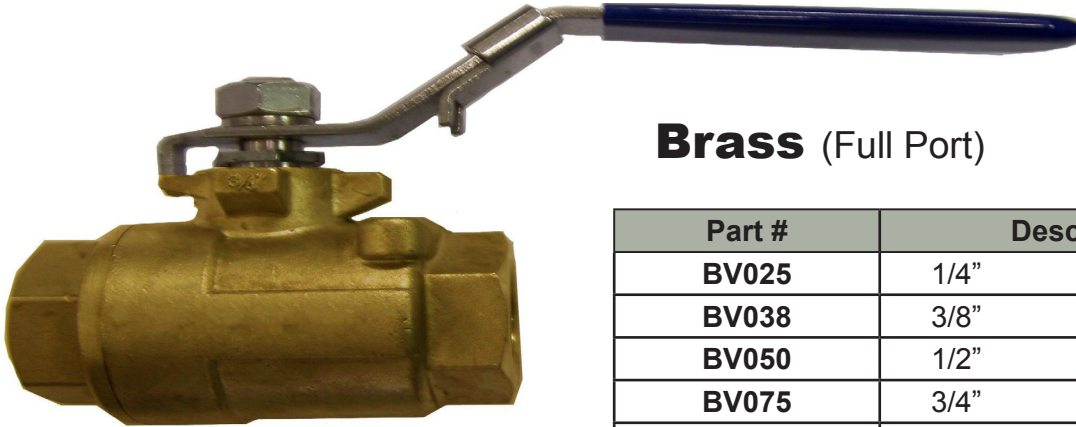
Part #	Tube O.D.	Thread
AQ68-DOTS-4X2	1/4"	1/8"
AQ68-DOTS-4X4	1/4"	1/4"
AQ68-DOTS-6X4	3/8"	1/4"
AQ68-DOTS-6X6	3/8"	3/8"
AQ68-DOTS-6X8	3/8"	1/2"
AQ68-DOTS-8X4	1/2"	1/4"
AQ68-DOTS-8X6	1/2"	3/8"
AQ68-DOTS-8X8	1/2"	1/2"
AQ68-DOTS-10X6	5/8"	3/8"
AQ68-DOTS-10X8	5/8"	1/2"



CENTRAL HYDRAULICS INC.

•Daytona Beach •Cocoa •Leesburg •Ocala •Tampa 1-800-264-9571

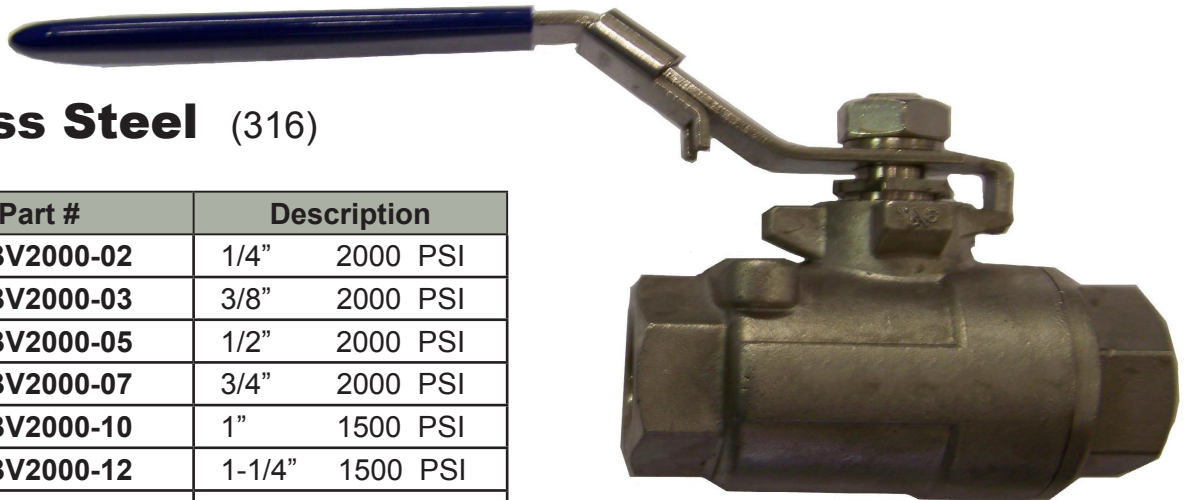
Ball Valves



Brass (Full Port)

Part #	Description	
BV025	1/4"	600 PSI
BV038	3/8"	600 PSI
BV050	1/2"	600 PSI
BV075	3/4"	600 PSI
BV100	1"	600 PSI
BV125	1-1/4"	600 PSI
BV150	1-1/2"	600 PSI
BV200	2"	600 PSI
BV250	2-1/2"	400 PSI
BV300	3"	400 PSI
BV400	4"	400 PSI

All stainless ball valves have locking handles, Teflon seals, and blow-out proof stems. Female NPT threads.



Stainless Steel (316)

Part #	Description	
SSBV2000-02	1/4"	2000 PSI
SSBV2000-03	3/8"	2000 PSI
SSBV2000-05	1/2"	2000 PSI
SSBV2000-07	3/4"	2000 PSI
SSBV2000-10	1"	1500 PSI
SSBV2000-12	1-1/4"	1500 PSI
SSBV2000-15	1-1/2"	1500 PSI

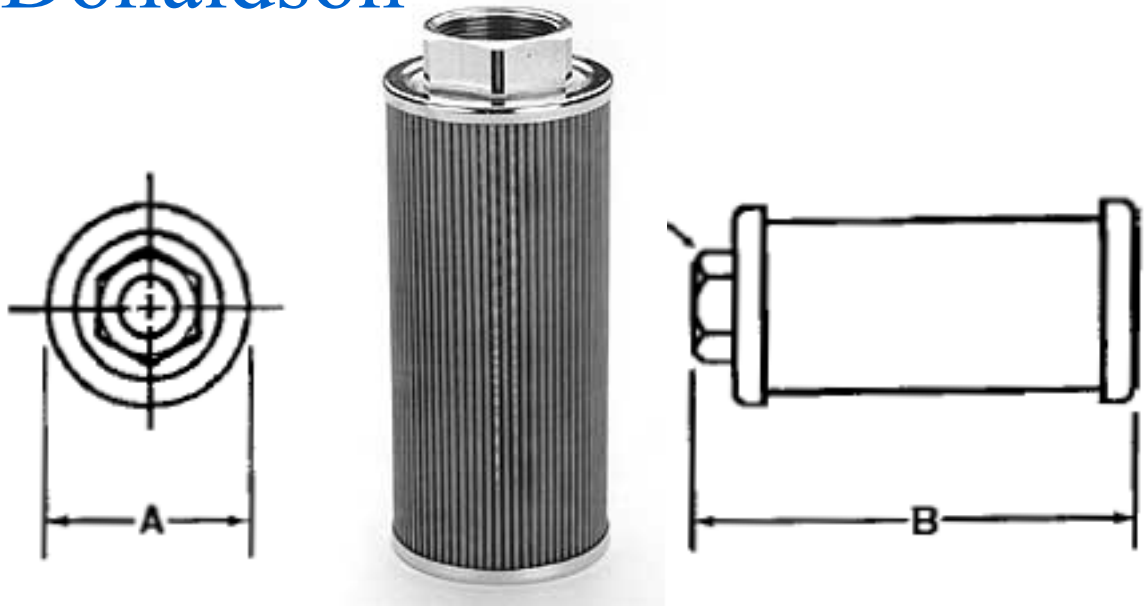
CENTRAL HYDRAULICS INC.

•Daytona Beach •Cocoa •Leesburg •Ocala •Tampa 1-800-264-9571

Suction Strainers



Donaldson



Part #	NPT Size	Dim. A	Dim. B	Max. Flow
P169013	3/4"	2.63	3.55	8
P169014	1"	2.63	5.35	10
P169015	1-1/4"	3.38	6.85	20
P169016	1-1/2"	3.38	8.01	30
P169017	1-1/2"	3.94	9.80	50
P169018	2"	3.94	9.80	50
P169019	2-1/2"	5.12	10.10	75
P169020	3"	5.12	11.78	100

Many other sizes available!

Donaldson suction strainers are zinc-plated, with stainless steel mesh screens and rugged steel core centers epoxy bonded to heavy gauge connector and end caps. Suction strainers filter petroleum-based hydraulic fluids, phosphate esters, waters glycols, lubricating oils, coolants, fuels and water in fluid reservoirs, sumps and similar applications. They are cleanable and reusable. Clean by swishing in non-caustic solvent, then blow dry from inner diameter to outer diameter with compressed air.

CENTRAL HYDRAULICS INC.

•Daytona Beach •Cocoa •Leesburg •Ocala •Tampa 1-800-264-9571

3500 PSI Flow Meters

HEDLAND

Aluminum Flow Meters



for Petroleum Fluids

FEATURES

- Direct reading
- Install in any position
- 360° rotatable guard/scale
- Easier-to-read linear scale
- No flow straighteners or special piping required
- Relatively insensitive to and shock and vibration
- Good viscosity stability
- Temperature up to 240 °F
- Accuracy $\pm 2\%$ full scale
- Repeatability $\pm 1\%$
- Special scales available
- Calibrated for .876 S.G.

NOMINAL PORT SIZE	GPM	Part #
1/4" SAE 6	0.1 - 1.0	H200A - 010
	0.2 - 2.0	H200A - 020
1/2" SAE 10	0.1 - 1.0	H600A - 001
	0.2 - 2.0	H600A - 002
	0.5 - 5.0	H600A - 005
	1 - 10 1 - 15	H600A - 010 H600A - 015
3/4" SAE 12	0.2 - 2.0	H700A - 002
	.05 - 5.0	H700A - 005
	1 - 10	H700A - 010
	2 - 20 3 - 30	H700A - 020 H700A - 030
1" SAE 16	0.2 - 2.0	H760A - 002
	.05 - 5.0	H760A - 005
	1 - 10	H760A - 010
	2 - 20 3 - 30	H760A - 020 H760A - 030
	4 - 40 5 - 50	H760A - 040 H760A - 050
1-1/4" SAE 20	3 - 30	H800A - 030
	5 - 50	H800A - 050
	10 - 75	H800A - 075
	10 - 100 10 - 150	H800A - 100 H800A - 150
1-1/2" SAE 24	3 - 30	H860A - 030
	5 - 50	H860A - 050
	10 - 75	H860A - 075
	10 - 100 10 - 150	H860A - 100 H860A - 150

THREADS:

SAE O-RING BOSS

TEMPERATURE RANGE:

-20 to +240 °F (-29 to +116 °C)

CENTRAL HYDRAULICS INC.

•Daytona Beach •Cocoa •Leesburg •Ocala •Tampa 1-800-264-9571

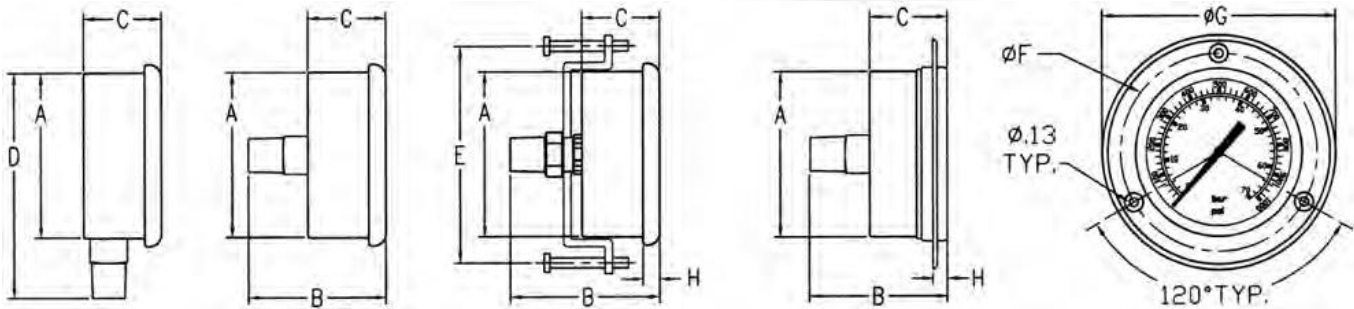
Gauges

CF Series 1-1/2, 2 and 2-1/2 Glycerin Filled

- Stainless Steel Case & Bezel
- Brass & Phosphor Bronze Bourdon Tube
- Vacuum to 6,000psi Range
- Dual Scale PSI & BAR
- Accuracy $\pm 1.6\%$ FSD
- Temperature Range -40° to 180° F
- Brass Connection



INSTALLATION DATA



Size	A	B	C	D	E	F	G	H
1 - 1/2"	1.61	1.75	1.00	-	-	-	-	.20
2"	2.00	2.25	1.16	3.09	2.36	2.51	2.87	.21
2 - 1/2"	2.44	2.25	1.14	3.42	3.17	2.93	3.43	.24

Ordering Example: **CF** - **1** **P** - **004** - **A**

Model	Size	Type	Range	Style
CF	1 to 2-1/2 dia.	C - compound	002 - 30" Hg - 30psi	A - stem
Designation for glycerine filled gauges	5 to 2 dia.	V - vacuum	000 - 30 Hg" - 0psi	B - panel clamp
	*4 to 1-1/2 dia.	P - pressure	001 - 15psi	D - ctr. back
			002 - 30psi	E - panel flange
			004 - 60psi	
			007 - 100psi	
			010 - 160psi	
			015 - 200psi	
			020 - 300psi	
			040 - 600psi	
			070 - 1000psi	
			100 - 1500psi	
			140 - 2000psi	
			210 - 3000psi	
			280 - 4000psi	
			350 - 5000psi	
			420 - 6000psi	

*Note: 1-1/2" available only as a center back mount
port size - 1/8npt. Limited to 5000psi.

Port Sizes for 2" and 2-1/2" are 1/4npt
Special sizes subject to minimum order qty.

CENTRAL HYDRAULICS INC.

•Daytona Beach •Cocoa •Leesburg •Ocala •Tampa 1-800-264-9571

Hose and Tube Clamps



Single Clamps

Clamp I.D.	Part #
0.250	S-1004S
0.375	S-1006S
0.405	S-1007S
0.500	S-2008S
0.540	S-2009S
0.625	S-2010S
0.675	S-2011S
0.750	S-3012S
0.840	S-3014S
0.875	S-3015S
1.000	S-3016S
1.050	S-4017S
1.125	S-4018S
1.250	S-5020S
1.315	S-5021S
1.500	S-5024S
1.660	S-5027S
1.750	S-6028S
1.900	S-6030S
2.000	S-6032S
2.375	S-7038S

Clamp I.D.	Part #
0.250	T-1004S
0.375	T-1006S
0.405	T-1007S
0.500	T-2008S
0.540	T-2009S
0.625	T-2010S
0.675	T-2011S
0.750	T-3012S
0.840	T-3014S
0.875	T-3015S
1.000	T-3016S
1.050	T-4017S
1.125	T-4018S
1.250	T-5020S
1.315	T-5021S
1.500	T-5024S
1.660	T-5027S

Measure the O.D. of your hose, tube, or pipe to figure out which clamp you need. Bottom plate welds in place.

Twin Clamps



CENTRAL HYDRAULICS INC.

•Daytona Beach •Cocoa •Leesburg •Ocala •Tampa 1-800-264-9571

Hose Sleeves and Wraps

Heavy Wall High Density Spiral Hose Wrap

Advantages:

- ADDS CRUSH PROTECTION
- ABRASION PROTECTION
- BUNDLES HOSES
- EASY TO INSTALL



RATED FROM -180°F TO 250°F



BLACK WRAP IS **IN STOCK**.
CUT LENGTHS AVAILABLE.

6 Other colors available in
BOX QUANTITIES ONLY.

Part #	I.D. Inches	Box Quantity
93050	1/2" #4 Hose(1/4")	100 F.T.
93075	3/4" #6 Hose (3/8")	100 F.T.
93100	1" #8 & #10 Hose (1/2n & 5/8")	100 F.T.
93125	1-1/4" #12 Hose (3/4")	100 F.T.
93150	1-1/2" #16 & #20 Hose (1" & 1 Y4")	100 F.T.
93200	2" #24 Hose (1 1/2")	50 F.T.
93250	2-1/2" #32 Hose (2")	50 F.T.
93300	3" Used Mainly For Bundling	50 F.T.
93350	3-1/2" Used Mainly For Bundling	30 F.T.
93400	4" Used Mainly For Bundling	30 F.T.
93600	6" Used Mainly For Bundling	20 F.T.



CENTRAL HYDRAULICS INC.

•Daytona Beach •Cocoa •Leesburg •Ocala •Tampa 1-800-264-9571

Fuel Transfer Pumps

FILL-RITE.



Model FR1210C

15 GPM

12 Volt DC
Rotary Vane Pump

15
GPM

P/N FR1210C

- 1/4 H.P. 20 amp motor
- U/L listed
- Cast iron bump housing
- 1" inlet 3/4" outlet with a 2" tank adapter

Included In Box:

- Pump
- Owners Manual
- Pipe Fiting
- Teflon tape
- Steel telescoping suction tube
- 3/4" Manual nozzle
- 18' power cable
- 3/4" X 12' static guard hose

Typical Application

- Diesel fuel
- Gasoline
- Kerosene
- Mineral spirits
- Stoddard solvents
- Heptane

Optional Accessories:

Filter Element
CIM 70002



Filter Head
CIM 50003

3/4" Z Swivel
0350



FR807C



FR901

**3/4" Automatic
Shut off nozzle**
337004



CENTRAL HYDRAULICS INC.

•Daytona Beach •Cocoa •Leesburg •Ocala •Tampa 1-800-264-9571

Fuel Transfer Pumps

FILL-RITE.



Model FR4210

20 GPM

DC High Flow Pump

12 Volt DC
Rotary Vane Pump

P/N FR4210

- 1/4 H.P. 22 amp motor
- U/L listed
- Cast iron bump housing
- 1" inlet 1" outlet with a 2" tank adapter

20
GPM

Included In Box:

- Pump
- Owners Manual
- Pipe Fitting
- Teflon tape
- Steel telescoping suction tube
- 1" Manual nozzle
- 18' power cable
- 1" X 12' static guard hose

Typical Application

- Diesel fuel
- Gasoline
- Kerosene
- Mineral spirits
- Stoddard solvents
- Heptane

Optional Accessories:

Filter Element
CIM 70002



Filter Head
CIM 50002



1" Z Swivel
0087



FR807C



FR901

1" Automatic
Shut off nozzle
045704



CENTRAL HYDRAULICS INC.

•Daytona Beach •Cocoa •Leesburg •Ocala •Tampa 1-800-264-9571

Fuel Transfer Pumps

FILL-RITE.



Model FR700

20 GPM

AC Utility Rotary Vane Pump

115 Volt AC High Flow
Rotary Vane Pump

20
GPM

P/N FR700

- 1/3 H.P.
- U/L listed
- Cast iron bump housing
- 1" inlet 3/4" outlet with a 2" tank adapter

Included In Box:

- Pump
- Owners Manual
- 2" Tank Adapter
- Teflon tape
- Steel telescoping suction tube
- 3/4" Manual nozzle
- 3/4" X 12' static guard hose

Typical Application

- Diesel fuel
- Gasoline
- Kerosene
- Mineral spirits
- Stoddard solvents
- Heptane



Optional Accessories:

Filter Element
CIM 70002



Filter Head
CIM 50003

3/4" Z Swivel
0350



FR807C



FR901

3/4" Automatic
Shut off nozzle
337004



CENTRAL HYDRAULICS INC.

•Daytona Beach •Cocoa •Leesburg •Ocala •Tampa 1-800-264-9571

Fuel Transfer Pumps

FILL-RITE.



Model FR152

Piston Hand Pump

Piston Hand Pump
20gal per 100 strokes

P/N FR152

- U/L listed
- Aluminum body with stainless steel liner
- 1" inlet 3/4" outlet with a 2" tank adapter

- Pump
- Owners Manual
- 2" Tank Adapter
- Teflon tape
- Steel telescoping suction tube
- 3/4" nozzle
- 3/4" X 8' static guard hose

Typical Application

- Diesel fuel
- Gasoline
- Kerosene
- Most non-corrosive
- Light Oils

Optional Accessories:



3/4" Z Swivel
0350



NAS NS10
Filter Element
with drain for
gasoline and
diesel fuel



CENTRAL HYDRAULICS INC.

•Daytona Beach •Cocoa •Leesburg •Ocala •Tampa 1-800-264-9571

Fuel Transfer Pumps

FILL-RITE.



Model FR112

Rotary Hand Pump

Rotary Hand Pump
10gal per 100 revolutions

P/N FR112

- U/L listed
- Aluminum body with stainless steel liner
- 1" inlet 3/4" outlet with a 2" tank adapter

Included In Box:

- Pump
- Owners Manual
- 2" Tank Adapter
- Teflon tape
- Telescoping suction tube
- 3/4" nozzle
- 3/4" X 8' static guard hose
- Pipe fittings
- Water Deflector

Typical Application

- Diesel fuel
- Gasoline
- Kerosene
- Most non-corrosive
- Light Oils
- Motor Oils
- Hydraulic Oils
- Line Oils

Optional Accessories:



3/4" Z Swivel
0350



NAS NS10
Filter Element
vv drain for
gasoline and
diesel fuel



CENTRAL HYDRAULICS INC.

•Daytona Beach •Cocoa •Leesburg •Ocala •Tampa 1-800-264-9571

Service Truck Air Compressor

100% Cast-Iron Cylinders, Cylinder heads, connecting rods, and crankshaft

All cast-iron where it counts for longer life with less maintenance.

- Some pumps claim 100% cast-iron yet still have aluminum cylinders, cylinder heads, connecting rods and crankshafts — not FS-Curtis
- Ductile cast-iron crankshaft and connecting rods are stronger, more corrosion-resistant and less likely to break
- Slow-turning pump increases pump life
- Rugged parts and construction for industrial performance

Quality Components

Built for 100% continuous duty.

- Industry-leading stainless-steel valve assemblies for increased airflow and reliability
- Oversized tapered main roller bearings to ensure long life
- Premium finned intercooler maximizes heat dissipation
- Metal intake filter/silencer is superior to plastic
- Heavy-duty stamped-steel belt guard
- Suction valve head unloaders for continuous running air compressors

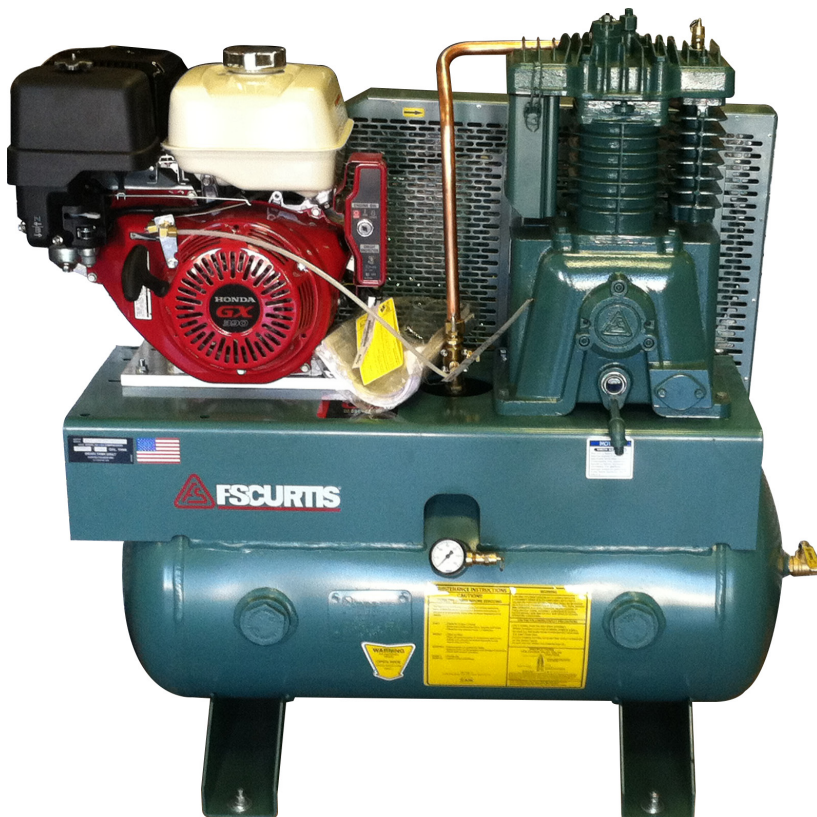
Centro-Ring Pressure Lubrication

Patented FS-Curtis design.

- Proprietary vvttechnology is an FS-Curtis exclusive
- Supplies pressurized oil internally to all bearings and critical wear surfaces through the rifle-drilled crankshaft and connecting rods
- Helps ensure maximum uptime and increase service life

HEAVY-DUTY PERFORMANCE

Masterline is the most robust, heavy-duty reciprocating air compressor lineup available. The perfect combination of quality components and efficient design make the MI Series rugged, affordable and smart. Because every model is built tough to last a lifetime in demanding working conditions, the MI Series is an outstanding alternative to splash-lubricated reciprocating compressors and small rotary compressors. Choose higher quality. Choose superior durability. Choose MI Series pressure lubricated air compressors.



CENTRAL HYDRAULICS INC.

•Daytona Beach •Cocoa •Leesburg •Ocala •Tampa 1-800-264-9571

NOTES

CENTRAL HYDRAULICS INC.

•Daytona Beach •Cocoa •Leesburg •Ocala •Tampa **1-800-264-9571**

NOTES
