

# CENTRAL HYDRAULICS INC.

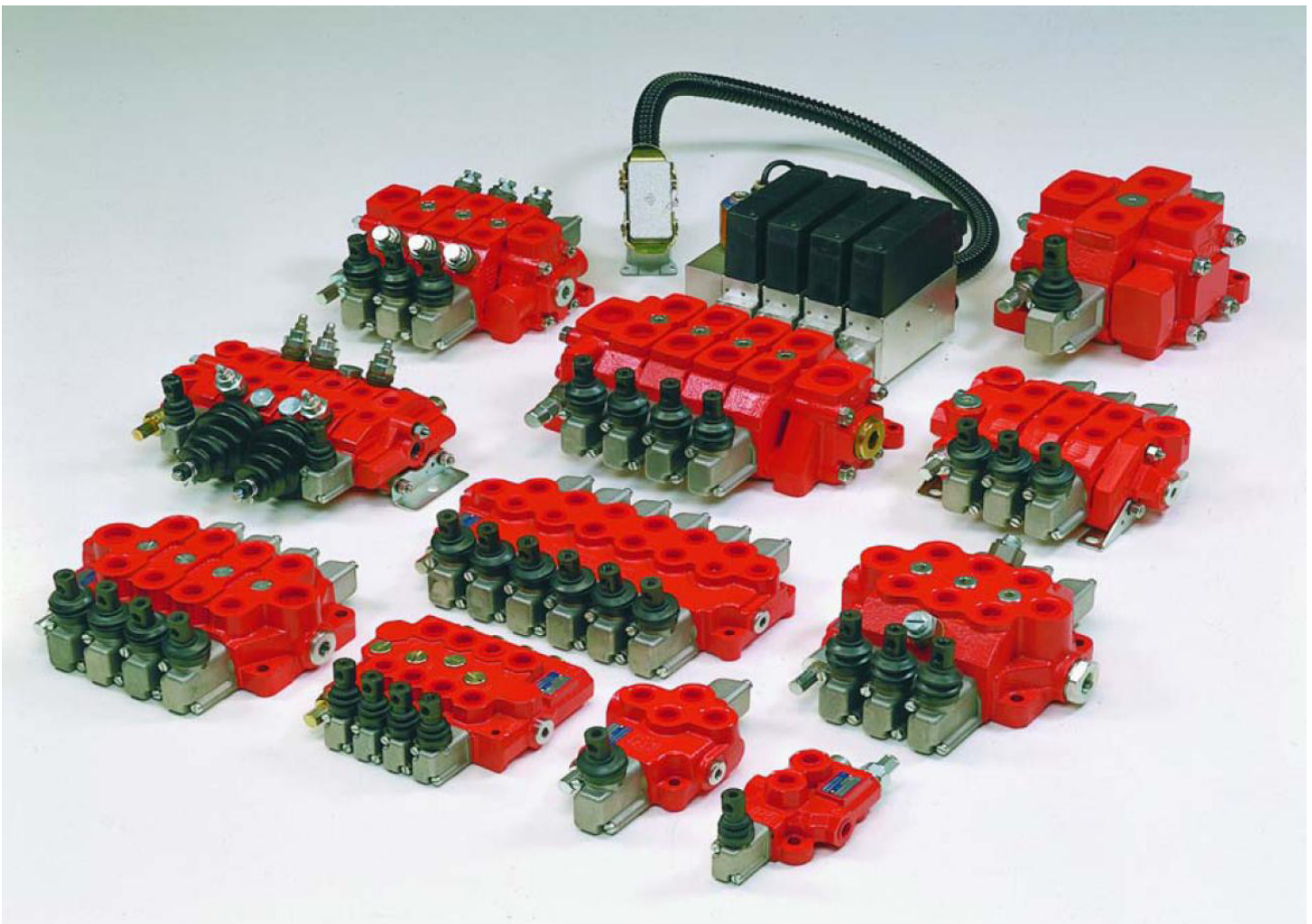
•Daytona Beach •Cocoa •Leesburg •Ocala •Tampa 1-800-264-9571



**Monobloc and sectional directional control valves**

Custom designs available

We keep the Monobloc styles in stock!

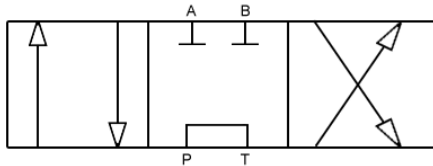


# CENTRAL HYDRAULICS INC.

•Daytona Beach •Cocoa •Leesburg •Ocala •Tampa 1-800-264-9571

## MANUAL CONTROL VALVES

4-way 3-Position S/C to neutral



**HDM140 - 1 spool**  
P/N 200051417006



**BUCHER**  
HYDRAULICS

**Monoblock - 8 O-Ring Boss**  
**Max. 10gpm - 3600psi**  
(SOLD SEPERATELY)

6" Handle  
P/N 200702210190

Detent Kit  
P/N 200768520010

**IN STOCK!**

**HDM11P - 2 spool**  
P/N 200061127007

**HDM11P - 3 spool**  
P/N 200061137011

**HDM11P - 4 spool**  
P/N 200061147007

**HDM11P - 5 spool**  
P/N 200061157003

**HDM11P - 6 spool**  
P/N 200061167007

**Monoblock - 8 O-Ring Boss**  
**Max. 12gpm - 3600psi**

(SOLD SEPERATELY)

6" Handle  
P/N 200702210190

3 POS DETENT  
P/N 200768520010

Power Beyond Option  
P/N 200527160201



**IN STOCK!**



**IN STOCK!**

**Monoblock - 10 O-Ring Boss**

**Max. 18gpm - 5000psi**

(SOLD SEPERATELY)

7-1/4" Handle  
P/N 200702220010

Detent Kit  
P/N 200968620140

Power Beyond Option  
P/N 200770000460

**HDM18 - 1 spool**  
P/N 200071818007

**HDM18 - 2 spool**  
P/N 200071828010

**HDM18 - 3 spool**  
P/N 200071838025

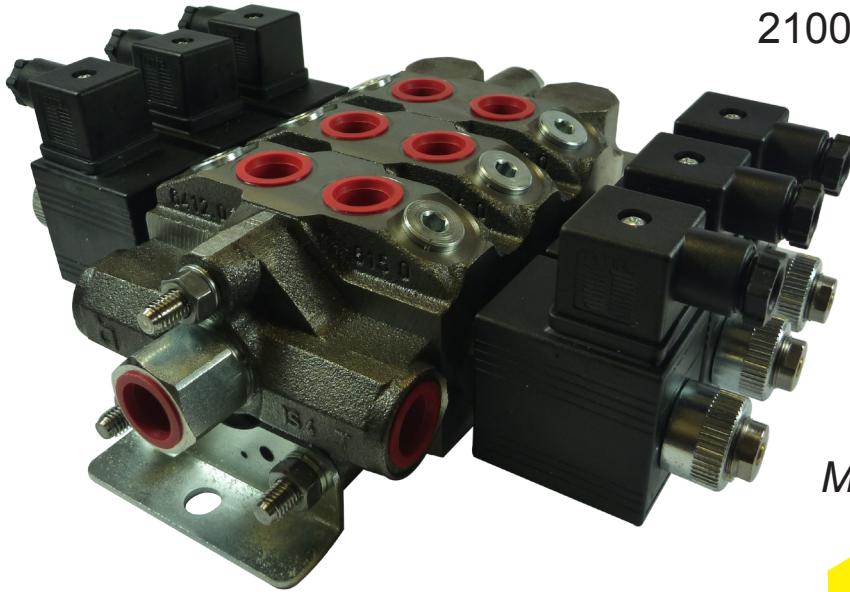
**HDM18 - 4 spool**  
P/N 200071848007

# CENTRAL HYDRAULICS INC.

•Daytona Beach •Cocoa •Leesburg •Ocala •Tampa 1-800-264-9571

## Sectional Electric Control Valves

**12vDC HDS11**



12gpm Max Flow

2100 - 3600 psi Relief Standard  
up to 5000 psi available

1-6 Spools Assemblies

#8 ORB Ports

4-Way 3-Pos is Standard

*Many Spool Options Available!*

**Custom  
Built from  
Stock in  
24 Hours!**

Inlet w/Relief	200931070030
Outlet - Standard	200630070010
Outlet with Power Beyond HPCO	200930070020
Section 4way 3position A/B closed	200741270017
Mounting Bracket	200677200421
-- -- 2 Section Assembly	20001127002
-- -- 3 Section Assembly	530020300
-- -- 3 Section w/Power Beyond	530021817

\* Bolt Kits Based on Number of Spools

The logo for Bucher Hydraulics, featuring a stylized red 'b' followed by the words 'BUCHER HYDRAULICS' in a bold, black, sans-serif font.

Fax: 386-257-5728 Tele. 1-800-264-9571 sales@centralhydraulics.com www.centralhydraulics.com



# CENTRAL HYDRAULICS INC.

•Daytona Beach •Cocoa •Leesburg •Ocala •Tampa 1-800-264-9571

## Sectional Directional Control Valves



**Custom  
Built from  
Stock in  
24 Hours!**

### HDS20

25gpm Max Flow  
3600 Max operating pressure  
1-10 Spools Assemblies  
Adjustable Direct Acting Relief Valve

#12 ORB Inlet/Outlet  
#10 ORB Work Ports  
4-Way 3-Position is Standard

*Many Spool Options Available!*

#12 ORB LH Inlet w/relief	200787400800
#12 ORB RH Outlet w/HPCO	200930490080
#12 ORB RH Outlet Standard	200930490020
#10 ORB 4-Way 3-Pos Cylinder Spool Section	200741480001
#10 ORB MTR Spool Section ABT Common	200741480005
3 Position Detent Kit	200968620020
7.25" Handle	200702220010

\* Bolt Kits Based on Number of Spools



# CENTRAL HYDRAULICS INC.

•Daytona Beach •Cocoa •Leesburg •Ocala •Tampa 1-800-264-9571

## Sectional Directional Control Valves



**Custom  
Built from  
Stock in  
24 Hours!**

### HDS30

35 Gpm Max Flow

3600 Max operating pressure

1-10 Spools Assemblies

#16 ORB Inlet/Outlet

#12 ORB Work Ports

4-Way 3-Position is Standard

*Many Spool Options Available!*

#16 ORB LH Inlet w/relief	200931690020
#16 ORB RH Outlet w/HPCO	200930490040
#16 ORB RH Outlet Standard	200630690030
#12 ORB 4-Way 3-Pos Cylinder Spool Section	200741690001
#12 ORB MTR Spool Section ABT Common	600130100549
3 Position Detent Kit	200968620020
7.25" Handle	200702220010

\* Bolt Kits Based on Number of Spools

**b** **BUCHER**  
HYDRAULICS

Fax: 386-257-5728 Tele. 1-800-264-9571 sales@centralhydraulics.com www.centralhydraulics.com