

# CENTRAL HYDRAULICS INC.

•Daytona Beach •Cocoa •Leesburg •Ocala •Tampa 1-800-264-9571

## Rotary-Actuated Control Valves



The valve handle is rotated to actuate the spool, as opposed to shifting the spool axially. This provides finer metering control. These valves incorporate a mechanical detent in the neutral position.

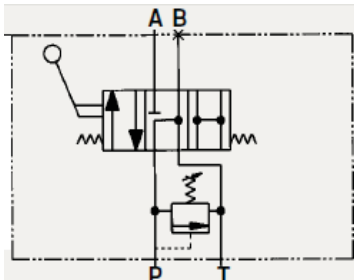
- Flows up to 30 gpm max
- Pressure up to 2,500psi

20050 -- 3/4" In/Out 1/2" Work Ports  
20051 -- 3/4" In/Out 3/4" Work Ports

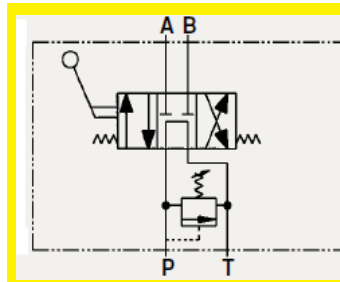
**WARNING:** These valves do not contain load checks and therefore should not be used in lifting applications unless some other means of holding the load is provided.

### Rotary - Actuated SERIES Valves

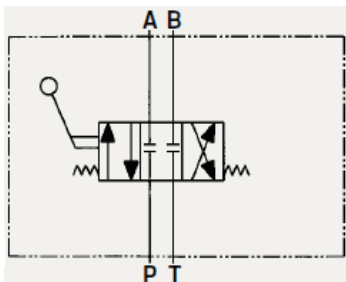
**IN STOCK!**



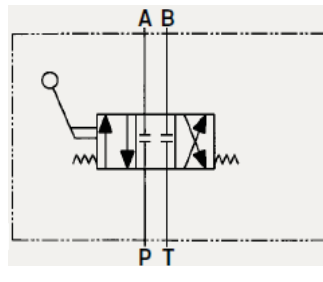
**Rotary Spool Three-Way Tandem Center with Relief Valve**  
MODEL NUMBER  
**20048-1/2" NPTF Ports**  
**20049-3/4" NPTF Ports**  
(SAE ORB Ports also Available)



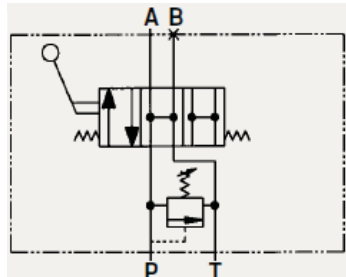
**Rotary Spool Four-Way Tandem Center with Relief Valve**  
MODEL NUMBER  
**20050-1/2" NPTF Ports**  
**20051-3/4" NPTF Ports**  
(SAE ORB Ports also Available)



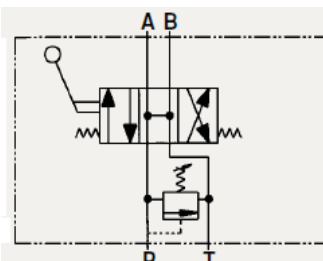
**Rotary Spool Three-Way Closed Center no Relief Valve**  
MODEL NUMBER  
**10217-1/2" NPTF Ports**  
**10218-3/4" NPTF Ports**  
(SAE ORB Ports also Available)



**Rotary Spool Four-Way Closed Center no Relief Valve**  
MODEL NUMBER  
**10219-1/2" NPTF Ports**  
**10220-3/4" NPTF Ports**  
(SAE ORB Ports also Available)



**Rotary Spool Three-Way Open Center with Relief Valve**  
MODEL NUMBER  
**10238-1/2" NPTF Ports**  
**10239-3/4" NPTF Ports**  
(SAE ORB Ports also Available)



**Rotary Spool Four-Way Open Center with Relief Valve**  
MODEL NUMBER  
**10240-1/2" NPTF Ports**  
**10241-3/4" NPTF Ports**  
(SAE ORB Ports also Available)